

Residential End-Use Sales Estimates for 1995

End Uses	Pct. of Total	1995 Sales (MWh)	Year-round Saturation	Number of Appliances	Avg. Annual Usage (kWh)	Weather Normalized	Basis
Main Source W/H	21.3%	595,619	44.8%	165,450	3,600	3,600	Brown
Refrigerators	14.5%	407,105	112.6%	415,414	980	980	REMP
Lighting	9.4%	263,819	100.0%	368,978	715	715	CMP est.
Clothes Dryers	7.6%	213,083	77.7%	286,788	743	743	REMP
Color TV (Analog)	3.2%	89,536	172.1%	635,011	141	141	Sanchez
Digital TV	0.0%	0	0.0%	0	320	320	Rosen/Meier
Computers	1.0%	29,038	50.4%	186,140	156	156	Sanchez
Range	4.6%	130,074	85.4%	314,950	413	413	REMP
Microwave	1.0%	27,317	91.4%	337,246	81	81	REMP
Fossil Heat Aux.	5.5%	155,092	86.6%	319,544	485	471	Brown
Main Source S/H	4.7%	132,319	4.5%	16,503	8,018	7,781	REMP
Supplemental S/H	1.1%	29,816	10.0%	36,953	807	783	REMP
Freezers	3.9%	110,048	44.1%	162,553	677	677	REMP
Water Pumps	1.3%	35,389	35.5%	131,070	270	270	REMP
Clothes Washers	1.1%	30,218	91.0%	335,760	90	90	REMP
Dishwashers	1.0%	28,880	45.8%	168,890	171	171	REMP
Hot Tubs & Spas	0.5%	13,006	2.4%	8,671	1,500	1,500	CMP est.
Pool Pumps	0.7%	18,828	7.1%	26,031	723	693	REMP
Room Air Conditioning	0.8%	22,782	32.9%	121,265	188	180	Brown
Central Air Conditioning	0.1%	2,636	1.3%	4,677	564	540	CMP est.
Dehumidifiers	1.1%	31,064	14.9%	55,116	564	540	CMP est.
Humidifiers	0.3%	8,623	23.4%	86,230	100	100	Sanchez
Other Misc.	9.8%	273,532	100.0%	368,978	741	741	Residual
Seasonal/Vacant	5.5%	154,324	25.0%	92,244	1,673	1,673	CMP est.
All Customers	100.0%	2,802,150		461,222	6,075		
Year-round	94.5%	2,647,826		368,978	7,176		
... excl. Other Misc.		2,374,294		368,978	6,435		
Control Total Usage		2,802,150					

Residential End-Use Saturations for Year-Round Customers

End Uses	Notes	Date When Home Energy Survey Was Conducted							Saturation Trend
		Jan. 1993	Jan. 1995	Jan. 1997	Jan. 1999	Jan. 2001	Jan. 2004	Jan. 2006	
Main Source W/H	(1)	51.1%	45.2%	41.8%	38.4%	37.1%	34.3%	32.4%	Saturation based upon switching/retention assumptions.
Refrigerators	(2),(3)	109.3%	112.6%	113.8%	119.1%	110.8%	108.5%	109.1%	0.06% decrease based upon Survey data.
Lighting	(4)	100.0%	100.0%	100.0%	100.0%	100.0%	100.0%	100.0%	Assumed to be 100%.
Clothes Dryers	(2)	74.6%	77.7%	80.5%	82.0%	82.0%	82.4%	81.5%	0.10% growth based upon Survey data.
Color TV	(2)	156.0%	172.1%	177.2%	184.9%	193.3%	198.3%	195.1%	Saturation held at 2006 level.
Digital TV	(2)						4.2%	9.3%	4.86% growth based upon Survey data for Color TV.
Computers	(2)	29.9%	49.3%	44.7%	56.3%	77.0%	94.0%	93.2%	4.59% growth based upon Survey data.
Range	(2)	85.8%	85.3%	82.9%	83.9%	82.7%	87.2%	93.5%	0.23% growth based upon Survey data.
Microwave	(2)	85.5%	91.1%	92.2%	95.7%	99.4%	101.1%	98.0%	1.20% growth based upon Survey data
Fossil Heat Aux.	(5)	79.0%	86.5%	88.8%	90.7%	90.3%	91.7%	91.4%	Saturation based upon switching/retention assumptions.
Main Source S/H	(1)	6.8%	4.5%	3.7%	3.3%	2.2%	3.2%	3.1%	Saturation based upon switching/retention assumptions.
Supplemental S/H	(1)	12.6%	10.0%	7.6%	8.8%	8.6%	12.4%	14.4%	0.10% growth based upon Survey data.
Freezers	(2),(3)	44.6%	44.2%	44.4%	42.6%	41.6%	38.1%	37.9%	0.58% decrease based upon Survey data.
Water Pumps	(2)	32.9%	35.2%	37.4%	44.8%	44.8%	49.6%	47.3%	1.29% growth based upon Survey data.
Clothes Washers	(2)	84.7%	90.8%	88.6%	90.2%	94.2%	94.7%	95.9%	0.79% growth based upon Survey data.
Dishwashers	(2)	42.3%	45.4%	48.4%	50.7%	52.9%	60.1%	61.2%	1.49% growth based upon Survey data.
Hot Tubs & Spas	(2)	1.7%	2.3%	3.8%	4.4%	3.3%	4.6%	5.2%	0.20% growth based upon Survey data.
Pool Pumps	(2)	6.0%	7.0%	8.5%	8.3%	9.7%	9.9%	9.0%	0.22% growth based upon Survey data.
Room A/C	(2)	26.0%	31.4%	35.1%	37.8%	40.8%	71.6%	84.1%	5.86% growth based upon Survey data.
Central A/C	(2)	0.7%	1.2%	1.7%	1.9%	2.8%	3.4%	4.3%	0.27% growth based upon Survey data.
Dehumidifiers	(2)	10.9%	14.6%	14.4%	18.8%	16.4%	26.8%	29.1%	1.35% growth based upon Survey data.
Humidifiers	(2)	25.5%	23.1%	22.8%	24.5%	29.6%	34.3%	31.9%	1.08% growth based upon Survey data.
Other Misc.	(4)	100.0%	100.0%	100.0%	100.0%	100.0%	100.0%	100.0%	Assumed to be 100%.
Seasonal/Vacant	(6)	25.0%	25.0%	25.0%	25.0%	25.0%	25.0%	25.0%	Assumed to be 25%.

- Notes:
- (1) Fuel saturation for year-round customers.
 - (2) Appliance saturation for year-round customers.
 - (3) Includes small refrigerators or freezers.
 - (4) Assumed to be 100%.
 - (5) Equals 100% less the fraction of customers heating primarily with electricity or wood.
 - (6) Based upon 2000 Census of Population for Maine.

Residential End-Use Saturations before adjustments

End Uses	1995	1996	1997	1998	1999	2000	2001	2002	2003	2004	2005	2006	2007	2008	2009	2010	2011
Main Source W/H	44.8%	43.1%	41.4%	39.7%	38.0%	37.4%	36.7%	35.8%	34.9%	33.9%	33.0%	32.0%	30.5%	29.0%	27.7%	26.4%	25.3%
Refrigerators	112.6%	113.2%	113.8%	116.4%	119.1%	114.9%	110.8%	110.0%	109.3%	108.5%	108.8%	109.1%	109.0%	109.0%	108.9%	108.8%	108.8%
Lighting	100.0%	100.0%	100.0%	100.0%	100.0%	100.0%	100.0%	100.0%	100.0%	100.0%	100.0%	100.0%	100.0%	100.0%	100.0%	100.0%	100.0%
Clothes Dryers	77.7%	79.1%	80.5%	81.3%	82.0%	82.0%	82.0%	82.2%	82.3%	82.4%	82.0%	81.5%	81.6%	81.7%	81.8%	81.9%	82.0%
Color TV	172.1%	174.7%	177.2%	181.1%	184.9%	188.5%	192.0%	194.1%	196.2%	198.3%	196.7%	195.1%	195.1%	195.1%	195.1%	195.1%	195.1%
Digital TV	0.0%	0.0%	0.0%	0.0%	0.0%	1.2%	2.5%	3.5%	4.4%	5.4%	8.0%	10.5%	15.4%	20.2%	25.1%	30.0%	34.8%
Computers	50.4%	48.1%	45.8%	51.6%	57.4%	67.8%	78.1%	83.8%	89.5%	95.1%	94.7%	94.3%	98.9%	103.5%	108.1%	112.7%	117.3%
Range	85.4%	84.2%	83.0%	83.5%	84.0%	83.4%	82.8%	84.3%	85.8%	87.3%	90.4%	93.6%	93.8%	94.0%	94.2%	94.5%	94.7%
Microwave	91.4%	92.0%	92.5%	94.3%	96.0%	97.9%	99.7%	100.3%	100.8%	101.4%	99.9%	98.3%	99.5%	100.7%	101.9%	103.1%	104.3%
Fossil Heat Aux.	86.6%	87.8%	88.9%	89.9%	90.8%	90.6%	90.4%	90.9%	91.3%	91.8%	91.7%	91.5%	91.6%	91.7%	91.8%	91.9%	92.0%
Main Source S/H	4.5%	4.1%	3.7%	3.5%	3.3%	2.7%	2.2%	2.5%	2.8%	3.2%	3.1%	3.1%	3.0%	3.0%	2.9%	2.9%	2.8%
Supplemental S/H	10.0%	8.8%	7.6%	8.2%	8.8%	8.7%	8.6%	9.9%	11.1%	12.4%	13.4%	14.4%	14.5%	14.5%	14.6%	14.7%	14.7%
Freezers	44.1%	44.2%	44.3%	43.4%	42.5%	42.0%	41.5%	40.3%	39.1%	38.0%	37.9%	37.8%	37.2%	36.6%	36.0%	35.4%	34.9%
Water Pumps	35.5%	36.6%	37.7%	41.4%	45.1%	45.1%	45.1%	46.7%	48.3%	49.9%	48.8%	47.6%	48.9%	50.2%	51.5%	52.8%	54.1%
Clothes Washers	91.0%	89.9%	88.8%	89.6%	90.4%	92.4%	94.4%	94.6%	94.7%	94.9%	95.5%	96.1%	96.9%	97.7%	98.5%	99.3%	100.0%
Dishwashers	45.8%	47.3%	48.8%	49.9%	51.1%	52.2%	53.3%	55.7%	58.1%	60.5%	61.0%	61.6%	63.1%	64.6%	66.0%	67.5%	69.0%
Hot Tubs & Spas	2.4%	3.1%	3.9%	4.2%	4.5%	3.9%	3.4%	3.8%	4.2%	4.7%	5.0%	5.3%	5.5%	5.7%	5.9%	6.1%	6.3%
Pool Pumps	7.1%	7.8%	8.6%	8.5%	8.4%	9.1%	9.8%	9.8%	9.9%	10.0%	9.5%	9.1%	9.3%	9.5%	9.7%	9.9%	10.2%
Room A/C	32.9%	34.7%	36.6%	37.9%	39.3%	40.8%	42.3%	52.5%	62.8%	73.1%	79.3%	85.6%	91.4%	97.3%	103.1%	109.0%	114.9%
Central A/C	1.3%	1.5%	1.8%	1.9%	2.0%	2.4%	2.9%	3.1%	3.3%	3.5%	3.9%	4.4%	4.6%	4.9%	5.2%	5.4%	5.7%
Dehumidifiers	14.9%	14.8%	14.7%	16.9%	19.1%	17.9%	16.7%	20.2%	23.7%	27.1%	28.3%	29.4%	30.8%	32.1%	33.5%	34.8%	36.2%
Humidifiers	23.4%	23.2%	23.1%	23.9%	24.8%	27.3%	29.9%	31.4%	33.0%	34.6%	33.4%	32.2%	33.3%	34.3%	35.4%	36.5%	37.6%
Other Misc.	100.0%	100.0%	100.0%	100.0%	100.0%	100.0%	100.0%	100.0%	100.0%	100.0%	100.0%	100.0%	100.0%	100.0%	100.0%	100.0%	100.0%
Seasonal/Vacant	25.0%	25.0%	25.0%	25.0%	25.0%	25.0%	25.0%	25.0%	25.0%	25.0%	25.0%	25.0%	25.0%	25.0%	25.0%	25.0%	25.0%

Note: forecasted saturations for W/H, FHA, and S/H end uses are calculated based on the number of appliances.

Number of Appliances before adjustments

<u>End Uses</u>	1995	1996	1997	1998	1999	2000	2001	2002	2003	2004	2005	2006	2007	2008	2009	2010	2011	CAGR 05-11
Main Source W/H	165,450	160,954	156,209	151,266	146,583	146,074	145,221	143,457	141,713	140,045	138,191	136,126	131,209	126,530	122,132	118,025	114,201	-3.1%
... Existing W/H	165,450	160,954	156,209	151,266	146,583	146,074	145,221	143,457	141,713	140,045	138,191	136,126	129,320	122,854	116,711	110,876	105,332	-4.4%
... New W/H Cust.													1,889	3,677	5,421	7,150	8,869	
Refrigerators	415,414	422,289	428,915	443,198	458,881	449,024	437,896	440,781	443,961	447,638	455,686	463,462	469,391	474,983	480,425	485,812	491,161	1.3%
Lighting	368,978	373,097	376,952	380,639	385,339	390,676	395,267	400,643	406,366	412,626	418,887	424,863	430,535	435,904	441,142	446,334	451,497	1.3%
Clothes Dryers	286,788	295,213	303,541	309,365	316,074	320,452	324,218	329,162	334,405	340,107	343,383	346,369	351,425	356,242	360,964	365,659	370,341	1.3%
Color TV	635,011	651,613	667,959	689,148	712,491	736,279	759,012	777,716	797,324	818,238	823,951	828,907	839,975	850,448	860,667	870,797	880,871	1.1%
Digital TV	0	0	0	0	0	4,863	9,841	13,881	18,042	22,344	33,364	44,674	66,195	88,205	110,704	133,699	157,189	29.5%
Computers	186,140	179,637	172,823	196,591	221,368	264,869	308,891	335,796	363,620	392,604	396,885	400,847	425,961	451,280	476,951	503,051	529,595	4.9%
Range	314,950	313,989	312,710	317,672	323,521	325,658	327,113	337,572	348,489	360,047	378,705	397,491	403,788	409,826	415,765	421,685	427,602	2.0%
Microwave	337,246	343,062	348,681	358,753	369,925	382,277	394,081	401,712	409,752	418,403	418,259	417,640	428,383	438,955	449,523	460,170	470,912	2.0%
Fossil Heat Aux.	319,544	327,402	335,120	342,014	349,897	353,962	357,331	364,061	371,158	378,801	383,921	388,760	394,459	399,866	405,146	410,382	415,589	1.3%
Main Source S/H	16,503	15,194	13,844	13,218	12,610	10,636	8,587	10,039	11,537	13,091	13,080	13,054	13,027	12,989	12,946	12,903	12,859	-0.3%
Supplemental S/H	36,953	32,888	28,705	31,270	33,968	34,047	34,052	39,590	45,303	51,228	56,194	61,244	62,320	63,359	64,385	65,410	66,438	2.8%
Freezers	162,553	164,741	166,820	165,026	163,596	163,908	163,858	161,413	158,977	156,612	158,570	160,407	160,052	159,519	158,877	158,158	157,369	-0.1%
Water Pumps	131,070	136,637	142,196	157,670	173,875	176,283	178,354	187,191	196,366	205,993	204,302	202,330	210,586	218,835	227,155	235,586	244,136	3.0%
Clothes Washers	335,760	335,404	334,724	341,043	348,337	360,975	373,122	378,865	384,954	391,572	400,027	408,283	417,135	425,780	434,381	443,020	451,712	2.0%
Dishwashers	168,890	176,372	183,849	190,025	196,802	203,826	210,569	223,048	235,987	249,525	255,615	261,599	271,506	281,387	291,341	301,420	311,635	3.4%
Hot Tubs & Spas	8,671	11,566	14,513	15,797	17,148	15,236	13,241	15,158	17,135	19,187	20,735	22,305	23,464	24,629	25,807	27,003	28,219	5.3%
Pool Pumps	26,031	29,120	32,248	32,183	32,195	35,376	38,558	39,350	40,183	41,077	39,815	38,471	39,932	41,389	42,857	44,343	45,850	2.4%
Room A/C	121,265	129,520	137,833	144,319	151,303	159,259	167,060	210,465	255,191	301,485	332,240	363,534	393,617	424,069	455,016	486,526	518,612	7.7%
Central A/C	4,677	5,662	6,663	7,108	7,582	9,445	11,334	12,290	13,278	14,308	16,410	18,556	19,966	21,392	22,840	24,314	25,814	7.8%
Dehumidifiers	55,116	55,358	55,553	64,471	73,744	70,078	66,158	80,947	96,190	111,976	118,493	125,069	132,551	140,089	147,727	155,491	163,386	5.5%
Humidifiers	86,230	86,633	86,963	91,049	95,448	106,733	118,066	125,949	134,114	142,645	139,783	136,678	143,153	149,646	156,208	162,867	169,628	3.3%
Other Misc.	368,978	373,097	376,952	380,639	385,339	390,676	395,267	400,643	406,366	412,626	418,887	424,863	430,535	435,904	441,142	446,334	451,497	1.3%
Seasonal/Vacant	92,244	93,274	94,238	95,160	96,335	97,669	98,817	100,161	101,591	103,157	104,722	106,216	107,634	108,976	110,285	111,583	112,874	1.3%
Year-round Cust.	368,978	373,097	376,952	380,639	385,339	390,676	395,267	400,643	406,366	412,626	418,887	424,863	430,535	435,904	441,142	446,334	451,497	1.3%
Total Residential	461,222	466,371	471,190	475,799	481,674	488,345	494,084	500,804	507,957	515,783	523,609	531,079	538,169	544,880	551,427	557,917	564,372	1.3%

Loss Rates - w/o retention programs

Water Heating													5.0%	5.0%	5.0%	5.0%	5.0%	
Space Heating (main source)														1.9%	1.9%	1.9%	1.9%	1.9%

Penetration Rates - new construction

Water Heating														33.3%	33.3%	33.3%	33.3%	33.3%
Space Heating														3.9%	3.9%	3.9%	3.9%	3.9%

Note: forecasted saturations for W/H, FHA, and S/H end uses are calculated based on the number of appliances.

Cust. Trend	1.000	1.011	1.022	1.032	1.044	1.059	1.071	1.086	1.101	1.118	1.135	1.151	1.167	1.181	1.196	1.210	1.224	
		1.1%	1.0%	1.0%	1.2%	1.4%	1.2%	1.4%	1.4%	1.5%	1.5%	1.4%	1.3%	1.2%	1.2%	1.2%	1.2%	

Average Device Efficiency, Degree Days, Income per Household, Price of Electricity

<u>End Uses</u>	1995	1996	1997	1998	1999	2000	2001	2002	2003	2004	2005	2006	2007	2008	2009	2010
Main Source W/H	0.872	0.875	0.878	0.881	0.884	0.888	0.891	0.894	0.897	0.908	0.919	0.930	0.951	0.972	0.993	1.013
Refrigerators	7.687	8.044	8.337	8.611	8.852	9.105	9.427	9.926	10.407	10.860	11.299	11.707	12.101	12.471	12.813	13.137
Lighting	20.116	20.355	20.597	20.842	21.090	21.341	21.595	21.837	22.082	22.330	22.581	22.901	23.225	23.554	23.888	24.226
Clothes Dryers	2.931	2.944	2.955	2.965	2.974	2.982	2.989	2.995	3.000	3.014	3.027	3.038	3.064	3.088	3.112	3.134
Color TV	1.000	1.018	1.036	1.054	1.073	1.092	1.111	1.131	1.151	1.171	1.192	1.213	1.235	1.257	1.279	1.302
Digital TV	1.000	1.018	1.036	1.054	1.073	1.092	1.111	1.131	1.151	1.171	1.192	1.213	1.235	1.257	1.279	1.302
Computers	1.000	1.018	1.036	1.054	1.073	1.092	1.111	1.131	1.151	1.171	1.192	1.213	1.235	1.257	1.279	1.302
Range	0.614	0.615	0.616	0.617	0.618	0.619	0.620	0.621	0.622	0.624	0.625	0.626	0.627	0.628	0.629	0.630
Microwave	1.000	1.000	1.000	1.000	1.000	1.000	1.000	1.000	1.000	1.000	1.000	1.000	1.000	1.000	1.000	1.000
Fossil Heat Aux.	0.776	0.778	0.780	0.782	0.784	0.786	0.788	0.790	0.791	0.793	0.795	0.797	0.799	0.801	0.803	0.805
Main Source S/H	1.000	1.000	1.000	1.000	1.000	1.000	1.000	1.000	1.000	1.000	1.000	1.000	1.000	1.000	1.000	1.000
Supplemental S/H	1.000	1.000	1.000	1.000	1.000	1.000	1.000	1.000	1.000	1.000	1.000	1.000	1.000	1.000	1.000	1.000
Freezers	12.741	13.129	13.491	13.831	14.197	14.563	14.941	15.354	15.698	16.016	16.291	16.523	16.751	16.919	17.073	17.229
Water Pumps	0.776	0.778	0.780	0.782	0.784	0.786	0.788	0.790	0.791	0.793	0.795	0.797	0.799	0.801	0.803	0.805
Clothes Washers	1.020	1.041	1.066	1.098	1.137	1.176	1.221	1.275	1.325	1.372	1.417	1.457	1.624	1.774	1.918	2.057
Dishwashers	0.393	0.402	0.413	0.425	0.437	0.449	0.462	0.476	0.489	0.502	0.512	0.522	0.528	0.532	0.537	0.540
Hot Tubs & Spas	0.776	0.778	0.780	0.782	0.784	0.786	0.788	0.790	0.791	0.793	0.795	0.797	0.799	0.801	0.803	0.805
Pool Pumps	0.776	0.778	0.780	0.782	0.784	0.786	0.788	0.790	0.791	0.793	0.795	0.797	0.799	0.801	0.803	0.805
Room A/C	8.397	8.510	8.623	8.721	8.811	8.920	9.044	9.169	9.262	9.332	9.390	9.436	9.488	9.534	9.578	9.615
Central A/C	8.397	8.510	8.623	8.721	8.811	8.920	9.044	9.169	9.262	9.332	9.390	9.436	9.488	9.534	9.578	9.615
Dehumidifiers	0.776	0.778	0.780	0.782	0.784	0.786	0.788	0.790	0.791	0.793	0.795	0.797	0.799	0.801	0.803	0.805
Humidifiers	0.776	0.778	0.780	0.782	0.784	0.786	0.788	0.790	0.791	0.793	0.795	0.797	0.799	0.801	0.803	0.805
Other Misc.	0.776	0.778	0.780	0.782	0.784	0.786	0.788	0.790	0.791	0.793	0.795	0.797	0.799	0.801	0.803	0.805
Seasonal	1.000	1.013	1.024	1.035	1.046	1.057	1.069	1.085	1.101	1.118	1.134	1.150	1.170	1.189	1.208	1.225
Heating Degree Days	7,304	7,344	7,336	6,330	6,602	7,090	6,877	6,835	7,466	7,247	7,189	6,621	7,088	7,088	7,088	7,088
THI Cooling Degree Days	191	116	121	195	242	131	218	232	207	141	256	193	183	183	183	183
Income (\$00)/YR Customer	58,300	59,802	61,364	64,367	65,442	67,430	69,104	68,942	69,260	70,547	70,542	69,805	69,532	70,263	71,654	73,002
... Elasticity = 0.2679																
Average Price (\$00)	0.1373	0.1367	0.1358	0.1353	0.1348	0.1285	0.1205	0.1184	0.1161	0.1108	0.1125	0.1225	0.1336	0.1400	0.1370	0.1311
... Elasticity = -0.1896																
Debt / Disposable Income	0.812	0.830	0.841	0.847	0.886	0.901	0.948	0.995	1.058	1.109	1.189	1.250	1.277	1.284	1.282	1.276
... Elasticity = 0.2954																
Average Price (\$00)																
<i>current year</i>	0.1370	0.1363	0.1354	0.1353	0.1342	0.1227	0.1184	0.1185	0.1137	0.1078	0.1172	0.1279	0.1392	0.1408	0.1331	0.1291
<i>prior year</i>	0.1375	0.1370	0.1363	0.1354	0.1353	0.1342	0.1227	0.1184	0.1185	0.1137	0.1078	0.1172	0.1279	0.1392	0.1408	0.1331
<i>average</i>	0.1373	0.1367	0.1358	0.1353	0.1348	0.1285	0.1205	0.1184	0.1161	0.1108	0.1125	0.1225	0.1336	0.1400	0.1370	0.1311

	CAGR
2011	05-11
1.033	2.0%
13.422	2.9%
25.033	1.7%
3.156	0.7%
1.325	1.8%
1.325	1.8%
1.325	1.8%
0.632	0.2%
1.000	0.0%
0.807	0.2%
1.000	0.0%
1.000	0.0%
17.392	1.1%
0.807	0.2%
2.189	7.5%
0.543	1.0%
0.807	0.2%
0.807	0.2%
9.655	0.5%
9.655	0.5%
0.807	0.2%
0.807	0.2%
0.807	0.2%
1.245	1.6%
7,088	-0.2%
183	-5.4%
74,208	0.8%
0.1271	2.0%
1.270	1.1%
0.1251	1.1%
0.1291	3.0%
0.1271	2.0%

Trends in Device Efficiency, Degree Days, Income per Household, Price of Electricity

End Uses	1995	1996	1997	1998	1999	2000	2001	2002	2003	2004	2005	2006	2007	2008	2009	2010
Main Source W/H	1.0000	1.0039	1.0074	1.0109	1.0145	1.0180	1.0215	1.0251	1.0286	1.0417	1.0544	1.0668	1.0912	1.1153	1.1390	1.1624
Refrigerators	1.0000	1.0463	1.0845	1.1201	1.1515	1.1844	1.2262	1.2912	1.3537	1.4127	1.4698	1.5229	1.5741	1.6223	1.6668	1.7089
Lighting	1.0000	1.0119	1.0239	1.0361	1.0484	1.0609	1.0735	1.0856	1.0978	1.1101	1.1225	1.1384	1.1546	1.1709	1.1875	1.2043
Clothes Dryers	1.0000	1.0044	1.0083	1.0117	1.0146	1.0173	1.0197	1.0218	1.0236	1.0284	1.0327	1.0364	1.0455	1.0538	1.0617	1.0693
Color TV	1.0000	1.0177	1.0358	1.0541	1.0728	1.0918	1.1112	1.1309	1.1509	1.1713	1.1921	1.2132	1.2347	1.2566	1.2789	1.3016
Digital TV	1.0000	1.0177	1.0358	1.0541	1.0728	1.0918	1.1112	1.1309	1.1509	1.1713	1.1921	1.2132	1.2347	1.2566	1.2789	1.3016
Computers	1.0000	1.0177	1.0358	1.0541	1.0728	1.0918	1.1112	1.1309	1.1509	1.1713	1.1921	1.2132	1.2347	1.2566	1.2789	1.3016
Range	1.0000	1.0018	1.0036	1.0054	1.0073	1.0091	1.0109	1.0127	1.0146	1.0164	1.0182	1.0201	1.0219	1.0238	1.0256	1.0275
Microwave	1.0000	1.0000	1.0000	1.0000	1.0000	1.0000	1.0000	1.0000	1.0000	1.0000	1.0000	1.0000	1.0000	1.0000	1.0000	1.0000
Fossil Heat Aux.	1.0000	1.0024	1.0048	1.0072	1.0096	1.0121	1.0145	1.0169	1.0194	1.0218	1.0243	1.0267	1.0292	1.0317	1.0342	1.0366
Main Source S/H	1.0000	1.0000	1.0000	1.0000	1.0000	1.0000	1.0000	1.0000	1.0000	1.0000	1.0000	1.0000	1.0000	1.0000	1.0000	1.0000
Supplemental S/H	1.0000	1.0000	1.0000	1.0000	1.0000	1.0000	1.0000	1.0000	1.0000	1.0000	1.0000	1.0000	1.0000	1.0000	1.0000	1.0000
Freezers	1.0000	1.0305	1.0589	1.0856	1.1143	1.1430	1.1727	1.2051	1.2321	1.2571	1.2787	1.2969	1.3148	1.3279	1.3400	1.3523
Water Pumps	1.0000	1.0024	1.0048	1.0072	1.0096	1.0121	1.0145	1.0169	1.0194	1.0218	1.0243	1.0267	1.0292	1.0317	1.0342	1.0366
Clothes Washers	1.0000	1.0199	1.0449	1.0764	1.1146	1.1528	1.1968	1.2494	1.2982	1.3447	1.3885	1.4280	1.5915	1.7387	1.8799	2.0162
Dishwashers	1.0000	1.0238	1.0525	1.0836	1.1140	1.1432	1.1763	1.2130	1.2470	1.2779	1.3051	1.3305	1.3444	1.3561	1.3677	1.3761
Hot Tubs & Spas	1.0000	1.0024	1.0048	1.0072	1.0096	1.0121	1.0145	1.0169	1.0194	1.0218	1.0243	1.0267	1.0292	1.0317	1.0342	1.0366
Pool Pumps	1.0000	1.0024	1.0048	1.0072	1.0096	1.0121	1.0145	1.0169	1.0194	1.0218	1.0243	1.0267	1.0292	1.0317	1.0342	1.0366
Room A/C	1.0000	1.0134	1.0268	1.0385	1.0493	1.0622	1.0770	1.0919	1.1030	1.1114	1.1182	1.1237	1.1299	1.1354	1.1406	1.1450
Central A/C	1.0000	1.0134	1.0268	1.0385	1.0493	1.0622	1.0770	1.0919	1.1030	1.1114	1.1182	1.1237	1.1299	1.1354	1.1406	1.1450
Dehumidifiers	1.0000	1.0024	1.0048	1.0072	1.0096	1.0121	1.0145	1.0169	1.0194	1.0218	1.0243	1.0267	1.0292	1.0317	1.0342	1.0366
Humidifiers	1.0000	1.0024	1.0048	1.0072	1.0096	1.0121	1.0145	1.0169	1.0194	1.0218	1.0243	1.0267	1.0292	1.0317	1.0342	1.0366
Other Misc.	1.0000	1.0024	1.0048	1.0072	1.0096	1.0121	1.0145	1.0169	1.0194	1.0218	1.0243	1.0267	1.0292	1.0317	1.0342	1.0366
Seasonal	1.0000	1.0128	1.0243	1.0353	1.0459	1.0567	1.0691	1.0852	1.1006	1.1177	1.1342	1.1501	1.1702	1.1893	1.2076	1.2255
Heating Degree Days	1.0305	1.0361	1.0350	0.8931	0.9314	1.0003	0.9702	0.9643	1.0533	1.0224	1.0142	0.9342	1.0000	1.0000	1.0000	1.0000
THI Cooling Degree Days	1.0437	0.6339	0.6612	1.0656	1.3224	0.7158	1.1913	1.2678	1.1333	0.7716	1.3967	1.0548	1.0000	1.0000	1.0000	1.0000
Income (\$00)/YR Customer	1.0000	1.0258	1.0525	1.1041	1.1225	1.1566	1.1853	1.1825	1.1880	1.2101	1.2100	1.1973	1.1927	1.2052	1.2291	1.2522
... Trend ^ Elasticity	1.0000	1.0068	1.0138	1.0269	1.0314	1.0397	1.0466	1.0459	1.0472	1.0524	1.0524	1.0494	1.0483	1.0513	1.0568	1.0621
Average Price (\$00)	1.0000	0.9957	0.9896	0.9859	0.9818	0.9360	0.8782	0.8628	0.8458	0.8069	0.8197	0.8927	0.9730	1.0200	0.9977	0.9550
... Trend ^ Elasticity	1.0000	1.0008	1.0020	1.0027	1.0035	1.0126	1.0249	1.0284	1.0323	1.0415	1.0384	1.0218	1.0052	0.9963	1.0004	1.0088
Debt / Disposable Income	1.0000	1.0221	1.0346	1.0426	1.0908	1.1093	1.1665	1.2253	1.3024	1.3646	1.4630	1.5393	1.5719	1.5806	1.5782	1.5706
... Trend ^ Elasticity	1.0000	1.0065	1.0101	1.0124	1.0260	1.0311	1.0465	1.0619	1.0812	1.0962	1.1190	1.1359	1.1429	1.1448	1.1443	1.1427
Heating Degree Days		0.5%	-0.1%	-13.7%	4.3%	7.4%	-3.0%	-0.6%	9.2%	-2.9%	-0.8%	-7.9%				
THI Cooling Degree Days		-39.3%	4.3%	61.2%	24.1%	-45.9%	66.4%	6.4%	-10.6%	-31.9%	81.0%	-24.5%				
Income (\$00)/Household		2.6%	2.6%	4.9%	1.7%	3.0%	2.5%	-0.2%	0.5%	1.9%	0.0%	-1.0%				
... Trend ^ Elasticity		0.7%	0.7%	1.3%	0.4%	0.8%	0.7%	-0.1%	0.1%	0.5%	0.0%	-0.3%				
Average Price (\$00)		-0.4%	-0.6%	-0.4%	-0.4%	-4.7%	-6.2%	-1.8%	-2.0%	-4.6%	1.6%	8.9%				
... Trend ^ Elasticity		0.1%	0.1%	0.1%	0.1%	0.9%	1.2%	0.3%	0.4%	0.9%	-0.3%	-1.6%				

Debt / Disposable Income	2.2%	1.2%	0.8%	4.6%	1.7%	5.2%	5.0%	6.3%	4.8%	7.2%	5.2%
<i>... Trend ^ Elasticity</i>	0.6%	0.4%	0.2%	1.3%	0.5%	1.5%	1.5%	1.8%	1.4%	2.1%	1.5%

Factor	1995	2000	2005	2010	CAGR 04-10
Average Efficiency	1.0000	1.0567	1.1342	1.2447	1.6%
Heating Degree Days	1.0305	1.0003	1.0142	1.0000	-0.2%
THI Cooling Degree Days	1.0437	0.7158	1.3967	1.0000	-5.4%
Real Income / Customer	1.0000	1.1566	1.2100	1.2729	0.8%
<i>... Trend ^ Elasticity</i>	1.0000	1.0397	1.0524	1.0668	0.2%
Real Price of Electricity	1.0000	0.9360	0.8197	0.9258	2.0%
<i>... Trend ^ Elasticity</i>	1.0000	1.0126	1.0384	1.0147	-0.4%
Debt / Disposable Income	1.0000	1.1093	1.4630	1.5631	1.1%
<i>... Trend ^ Elasticity</i>	1.0000	1.0311	1.1190	1.1410	0.3%

	CAGR
2011	05-11
1.1854	2.0%
1.7459	2.9%
1.2444	1.7%
1.0768	0.7%
1.3247	1.8%
1.3247	1.8%
1.3247	1.8%
1.0293	0.2%
1.0000	0.0%
1.0391	0.2%
1.0000	0.0%
1.0000	0.0%
1.3651	1.1%
1.0391	0.2%
2.1450	7.5%
1.3830	1.0%
1.0391	0.2%
1.0391	0.2%
1.1498	0.5%
1.1498	0.5%
1.0391	0.2%
1.0391	0.2%
1.0391	0.2%
1.2447	1.6%
1.0000	-0.2%
1.0000	-5.4%
1.2729	0.8%
1.0668	0.2%
0.9258	2.0%
1.0147	-0.4%
1.5631	1.1%
1.1410	0.3%

Avg. Device Efficiency for Seasonal/Vacant

End Uses	% of Non-Seas.	1995	1996	1997	1998	1999	2000	2001	2002	2003	2004	2005	2006	2007	2008	2009	2010	2011
Main Source W/H	22.5%	0.2249	0.2258	0.2266	0.2274	0.2282	0.2290	0.2298	0.2306	0.2314	0.2343	0.2372	0.2400	0.2455	0.2509	0.2562	0.2615	0.2666
Refrigerators	15.4%	0.1538	0.1609	0.1667	0.1722	0.1770	0.1821	0.1885	0.1985	0.2081	0.2172	0.2260	0.2341	0.2420	0.2494	0.2563	0.2627	0.2684
Lighting	10.0%	0.0996	0.1008	0.1020	0.1032	0.1045	0.1057	0.1070	0.1082	0.1094	0.1106	0.1118	0.1134	0.1150	0.1167	0.1183	0.1200	0.1240
Clothes Dryers	8.0%	0.0805	0.0808	0.0811	0.0814	0.0816	0.0819	0.0821	0.0822	0.0824	0.0828	0.0831	0.0834	0.0841	0.0848	0.0854	0.0861	0.0867
Color TV	3.4%	0.0338	0.0344	0.0350	0.0356	0.0363	0.0369	0.0376	0.0382	0.0389	0.0396	0.0403	0.0410	0.0418	0.0425	0.0432	0.0440	0.0448
Digital TV	0.0%	0.0000	0.0000	0.0000	0.0000	0.0000	0.0000	0.0000	0.0000	0.0000	0.0000	0.0000	0.0000	0.0000	0.0000	0.0000	0.0000	0.0000
Computers	1.1%	0.0110	0.0112	0.0114	0.0116	0.0118	0.0120	0.0122	0.0124	0.0126	0.0128	0.0131	0.0133	0.0135	0.0138	0.0140	0.0143	0.0145
Range	4.9%	0.0491	0.0492	0.0493	0.0494	0.0495	0.0496	0.0497	0.0498	0.0498	0.0498	0.0499	0.0500	0.0501	0.0502	0.0503	0.0504	0.0506
Microwave	1.0%	0.0103	0.0103	0.0103	0.0103	0.0103	0.0103	0.0103	0.0103	0.0103	0.0103	0.0103	0.0103	0.0103	0.0103	0.0103	0.0103	0.0103
Fossil Heat Aux.	5.9%	0.0586	0.0587	0.0589	0.0590	0.0591	0.0593	0.0594	0.0596	0.0597	0.0599	0.0600	0.0601	0.0603	0.0604	0.0606	0.0607	0.0609
Main Source S/H	5.0%	0.0500	0.0500	0.0500	0.0500	0.0500	0.0500	0.0500	0.0500	0.0500	0.0500	0.0500	0.0500	0.0500	0.0500	0.0500	0.0500	0.0500
Supplemental S/H	1.1%	0.0113	0.0113	0.0113	0.0113	0.0113	0.0113	0.0113	0.0113	0.0113	0.0113	0.0113	0.0113	0.0113	0.0113	0.0113	0.0113	0.0113
Freezers	4.2%	0.0416	0.0428	0.0440	0.0451	0.0463	0.0475	0.0487	0.0501	0.0512	0.0522	0.0531	0.0539	0.0546	0.0552	0.0557	0.0562	0.0567
Water Pumps	1.3%	0.0134	0.0134	0.0134	0.0135	0.0135	0.0135	0.0136	0.0136	0.0136	0.0137	0.0137	0.0137	0.0138	0.0138	0.0138	0.0139	0.0139
Clothes Washers	1.1%	0.0114	0.0116	0.0119	0.0123	0.0127	0.0132	0.0137	0.0143	0.0148	0.0153	0.0158	0.0163	0.0182	0.0198	0.0215	0.0230	0.0245
Dishwashers	1.1%	0.0109	0.0112	0.0115	0.0118	0.0122	0.0125	0.0128	0.0132	0.0136	0.0139	0.0142	0.0145	0.0147	0.0148	0.0149	0.0150	0.0151
Hot Tubs & Spas	0.5%	0.0049	0.0049	0.0049	0.0049	0.0050	0.0050	0.0050	0.0050	0.0050	0.0050	0.0050	0.0050	0.0051	0.0051	0.0051	0.0051	0.0051
Pool Pumps	0.7%	0.0071	0.0071	0.0071	0.0072	0.0072	0.0072	0.0072	0.0072	0.0072	0.0073	0.0073	0.0073	0.0073	0.0073	0.0074	0.0074	0.0074
Room A/C	0.9%	0.0086	0.0087	0.0088	0.0089	0.0090	0.0091	0.0093	0.0094	0.0095	0.0096	0.0096	0.0097	0.0097	0.0098	0.0098	0.0099	0.0099
Central A/C	0.1%	0.0010	0.0010	0.0010	0.0010	0.0010	0.0011	0.0011	0.0011	0.0011	0.0011	0.0011	0.0011	0.0011	0.0011	0.0011	0.0011	0.0011
Dehumidifiers	1.2%	0.0117	0.0118	0.0118	0.0118	0.0118	0.0119	0.0119	0.0119	0.0120	0.0120	0.0120	0.0120	0.0121	0.0121	0.0121	0.0122	0.0122
Humidifiers	0.3%	0.0033	0.0033	0.0033	0.0033	0.0033	0.0033	0.0033	0.0033	0.0033	0.0033	0.0033	0.0033	0.0034	0.0034	0.0034	0.0034	0.0034
Other Misc.	10.3%	0.1033	0.1036	0.1038	0.1041	0.1043	0.1046	0.1048	0.1051	0.1053	0.1056	0.1058	0.1061	0.1063	0.1066	0.1068	0.1071	0.1073
Average DEEA	100.0%	1.0000	1.0128	1.0243	1.0353	1.0459	1.0567	1.0691	1.0852	1.1006	1.1177	1.1342	1.1501	1.1702	1.1893	1.2076	1.2255	1.2447

Residential Avg. Annual Usage (kWh) per Appliance before adjustments

End Uses	1995	1996	1997	1998	1999	2000	2001	2002	2003	2004	2005	2006	2007	2008	2009	2010	2011
Main Source W/H	3,600	3,637	3,667	3,712	3,768	3,839	3,956	4,011	4,091	4,152	4,175	4,110	3,973	3,870	3,824	3,792	3,751
Refrigerators	980	950	927	912	904	898	897	867	846	834	815	784	750	724	711	702	693
Lighting	715	717	717	719	724	732	748	752	761	774	779	765	746	732	728	727	710
Clothes Dryers	743	750	756	766	778	793	818	831	848	868	880	873	856	845	847	851	852
Color TV	141	141	140	139	140	140	142	142	143	145	145	142	138	135	133	133	131
Digital TV	320	319	317	316	317	318	323	323	325	328	328	321	312	305	303	301	298
Computers	156	155	155	154	154	155	158	158	158	160	160	157	152	149	148	147	145
Range	413	418	422	428	435	444	459	466	476	488	496	493	487	484	487	492	496
Microwave	81	82	83	84	86	88	91	93	95	97	99	99	98	97	98	99	100
Fossil Heat Aux.	485	494	498	435	461	505	506	510	569	566	570	522	551	547	551	556	560
Main Source S/H	8,018	8,177	8,263	7,243	7,696	8,450	8,475	8,570	9,579	9,559	9,650	8,853	9,372	9,329	9,414	9,526	9,611
Supplemental S/H	807	823	832	729	774	850	853	862	964	962	971	891	943	939	947	959	967
Freezers	677	666	656	650	645	643	648	642	642	647	647	636	620	611	611	613	613
Water Pumps	270	273	276	279	284	290	299	303	310	317	322	320	316	314	316	319	321
Clothes Washers	90	90	88	87	86	85	84	82	81	80	79	77	68	62	58	55	52
Dishwashers	171	169	167	165	163	162	163	161	160	161	160	157	153	151	151	152	153
Hot Tubs & Spas	1,500	1,518	1,532	1,552	1,578	1,609	1,660	1,685	1,720	1,764	1,791	1,779	1,755	1,743	1,755	1,771	1,783
Pool Pumps	723	444	468	764	964	532	914	987	901	629	1,156	867	811	805	811	818	824
Room A/C	188	114	119	193	241	132	224	239	216	150	275	206	192	190	191	192	193
Central A/C	564	343	357	578	723	395	671	716	649	450	825	617	576	570	573	577	580
Dehumidifiers	564	346	365	596	751	415	712	769	702	490	900	676	632	628	632	638	642
Humidifiers	100	101	102	103	105	107	111	112	115	118	119	119	117	116	117	118	119
Other Misc.	741	750	757	767	780	795	820	833	850	872	885	879	868	862	867	875	881
Seasonal/Vacant	1,673	1,675	1,676	1,684	1,699	1,719	1,757	1,761	1,777	1,798	1,804	1,772	1,722	1,687	1,676	1,671	1,660

Residential Sales (MWh), before adjustment for Customer Retention & Energy Conservation

End Uses	1995	1996	1997	1998	1999	2000	2001	2002	2003	2004	2005	2006	2007	2008	2009	2010	2011	CAGR 05-11
Main Source W/H	595,619	585,394	572,785	561,507	552,397	560,803	574,533	575,445	579,702	581,527	576,950	559,498	521,348	489,699	467,010	447,507	428,386	-4.8%
... Existing W/H	595,619	585,394	572,785	561,507	552,397	560,803	574,533	575,445	579,702	581,527	576,950	559,498	513,842	475,470	446,282	420,398	395,116	-6.1%
... New W/H Cust.													7,506	14,229	20,728	27,109	33,270	#DIV/0!
Refrigerators	407,105	401,132	397,684	404,191	414,738	403,342	392,871	382,094	375,640	373,116	371,535	363,261	351,967	344,038	341,738	341,068	340,527	-1.4%
Lighting	263,819	267,372	270,090	273,808	279,067	285,842	295,539	301,391	309,351	319,331	326,264	324,999	321,125	319,149	321,347	324,411	320,420	-0.3%
Clothes Dryers	213,083	221,490	229,503	238,824	245,812	254,092	265,200	273,371	283,711	295,232	302,112	302,439	300,805	301,169	305,623	311,046	315,643	0.7%
Color TV	89,536	91,559	93,302	96,088	99,443	103,225	108,121	110,751	114,166	118,344	119,172	117,332	115,527	114,414	114,799	115,487	115,812	-0.5%
Digital TV	0	0	0	0	0	1,547	3,181	4,486	5,863	7,334	10,952	14,352	20,662	26,931	33,512	40,242	46,902	27.4%
PC + Monitor	29,038	27,926	26,709	30,327	34,183	41,084	48,682	52,906	57,604	62,824	63,510	62,776	64,818	67,171	70,385	73,813	77,035	3.3%
Range	130,074	131,281	132,041	136,022	140,869	144,700	150,027	157,235	165,804	175,784	187,834	196,012	196,546	198,230	202,552	207,509	211,914	2.0%
Microwave	27,317	28,183	28,980	30,291	31,820	33,616	35,834	37,164	38,792	40,720	41,428	41,203	41,792	42,631	44,051	45,632	47,114	2.2%
Fossil Heat Aux.	155,092	161,656	166,824	148,886	161,454	178,884	180,695	185,714	211,127	214,498	218,957	202,912	217,420	218,885	223,240	228,273	232,671	1.0%
Main Source S/H	132,319	124,237	114,395	95,742	97,053	89,871	72,776	86,037	110,520	125,130	126,226	115,568	122,084	121,180	121,874	122,912	123,587	-0.4%
Supplemental S/H	29,816	27,061	23,869	22,793	26,307	28,950	29,041	34,142	43,670	49,276	54,571	54,562	58,771	59,482	60,991	62,701	64,254	2.8%
Freezers	110,048	109,766	109,442	107,275	105,547	105,392	106,194	103,566	102,095	101,342	102,661	101,990	99,260	97,510	97,109	96,934	96,401	-1.0%
Water Pumps	35,389	37,326	39,206	44,058	49,378	51,056	53,288	56,765	60,790	65,399	65,855	64,804	66,538	68,669	71,751	75,120	78,352	2.9%
Clothes Washers	30,218	30,019	29,582	29,723	29,868	30,595	31,500	31,172	31,192	31,489	31,706	31,342	28,412	26,426	25,160	24,211	23,411	-4.9%
Dishwashers	28,880	29,876	30,650	31,260	32,080	33,098	34,363	35,912	37,822	40,119	40,954	40,949	41,593	42,543	44,069	45,856	47,594	2.5%
Hot Tubs & Spas	13,006	17,553	22,230	24,522	27,054	24,516	21,979	25,536	29,470	33,842	37,132	39,690	41,188	42,935	45,286	47,836	50,313	5.2%
Pool Pumps	18,828	12,942	15,090	24,595	31,033	18,825	35,224	38,828	36,186	25,827	46,009	33,360	32,384	33,335	34,745	36,292	37,768	-3.2%
Room A/C	22,782	14,790	16,392	27,784	36,448	20,973	37,339	50,238	55,165	45,269	91,345	74,815	75,526	80,610	86,870	93,633	100,282	1.6%
Central A/C	2,636	1,940	2,377	4,105	5,479	3,731	7,600	8,801	8,611	6,445	13,535	11,456	11,493	12,199	13,082	14,038	14,975	1.7%
Dehumidifiers	31,064	19,172	20,255	38,393	55,389	29,058	47,093	62,239	67,497	54,861	106,696	84,509	83,763	87,918	93,324	99,162	104,873	-0.3%
Humidifiers	8,623	8,765	8,880	9,423	10,039	11,449	13,065	14,146	15,377	16,773	16,688	16,214	16,752	17,392	18,274	19,234	20,163	3.2%
Other Misc.	273,532	279,841	285,363	292,031	300,459	310,667	324,249	333,580	345,403	359,685	370,729	373,624	373,502	375,559	382,583	390,762	397,851	1.2%
Seasonal/Vacant Ice Storm	154,324	156,265	157,941	160,287	163,642	167,871	173,599	176,366	180,494	185,525	188,890	188,185	185,338	183,808	184,843	186,494	187,396	-0.1%
				(30,045)														
Total	2,802,150	2,785,546	2,793,590	2,799,890	2,929,560	2,933,186	3,041,995	3,137,885	3,266,053	3,329,694	3,511,710	3,415,852	3,388,614	3,371,883	3,404,218	3,450,171	3,483,645	-0.1%
% Change		-0.6%	0.3%	0.2%	4.6%	0.1%	3.7%	3.2%	4.1%	1.9%	5.5%	-2.7%	-0.8%	-0.5%	1.0%	1.3%	1.0%	
Actual Sales	2,802,150	2,828,906	2,816,506	2,760,314	2,859,444	2,946,738	3,043,786	3,147,384	3,308,096	3,399,804	3,529,120							
Calculated Sales	2,802,150	2,785,546	2,793,590	2,799,890	2,929,560	2,933,186	3,041,995	3,137,885	3,266,053	3,329,694	3,511,710							
Variance	0	43,360	22,916	-39,576	-70,116	13,552	1,791	9,499	42,044	70,110	17,410							
Scaling Factor	1.0000	1.0156	1.0082	0.9859	0.9761	1.0046	1.0006	1.0030	1.0129	1.0211	1.0050							
		0.0156	0.0082	0.0141	0.0239	0.0046	0.0006	0.0030	0.0129	0.0211	0.0050	0.0109						

Information on Electric Space Heating, 1992-2006

Electric Space Heating Switching Rates (based on Fuel Saturations)

	1992	1993	1995	1997	1999	2001	2004	2006
<i>Resid. Customers (January)</i>	445,090	450,084	459,444	469,667	479,420	492,418	512,700	528,368
<i>Year-Round Customers</i>	356,072	360,067	367,555	375,734	383,536	393,934	410,160	422,694
<i>Fuel Saturation</i>	8.9%	6.8%	4.5%	3.7%	3.2%	2.2%	3.2%	3.1%
<i>No. of S/H Customers</i>	31,690	24,485	16,540	13,902	12,273	8,667	13,125	13,104
<i>Change in S/H Cust.</i>		-7,206	-7,945	-2,638	-1,629	-3,607	4,459	-22
<i>Percent Change</i>		-22.7%	-32.4%	-15.9%	-11.7%	-29.4%	51.4%	-0.2%
<i>Pct. Change / Year</i>		-22.7%	-16.2%	-8.0%	-5.9%	-14.7%	17.1%	-0.1%
<i>New Customers</i>		3,995	7,488	8,178	7,802	10,398	16,226	12,534
<i>S/H Sat. in New Homes</i>		3.0%	3.0%	0.0%	0.0%	0.0%	0.7%	3.9%
<i>New S/H Customers</i>		120	225	0	0	0	119	489
<i>Adjusted Change in S/H Cust.</i>		-7,326	-8,169	-2,638	-1,629	-3,607	4,340	-510
<i>Percent Change</i>		-23.1%	-33.4%	-15.9%	-11.7%	-29.4%	50.1%	-3.9%
<i>S/H Switching Rate / Year</i>		-23.1%	-16.7%	-8.0%	-5.9%	-14.7%	16.7%	-1.9%

Assumptions for Forecast:

- (1) Without CMP intervention, we would lose 1.9% of our primary S/H customers every year
- (2) Penetration rate for primary S/H in new homes = 3.9%

Information on Electric Water Heating, 1992-2006

Electric Water Heating Switching Rates (based on Fuel Saturations)

	1992	1993	1995	1997	1999	2001	2004	2006
<i>Resid. Customers (January)</i>	445,090	450,084	459,444	469,667	479,420	492,418	512,700	528,368
<i>Year-Round Customers</i>	356,072	360,067	367,555	375,734	383,536	393,934	410,160	422,694
<i>Fuel Saturation</i>	52.9%	51.1%	45.2%	41.8%	38.4%	37.1%	34.3%	32.4%
<i>No. of W/H Customers</i>	188,362	183,994	166,135	157,057	147,278	146,150	140,685	136,953
<i>Change in W/H Cust.</i>		-4,368	-17,859	-9,078	-9,779	-1,128	-5,465	-3,732
<i>Percent Change</i>		-2.3%	-9.7%	-5.5%	-6.2%	-0.8%	-3.7%	-2.7%
<i>Pct. Change / Year</i>		-2.3%	-4.9%	-2.7%	-3.1%	-0.4%	-1.2%	-1.3%
<i>New Customers</i>		3,995	7,488	8,178	7,802	10,398	16,226	12,534
<i>W/H Sat. in New Homes</i>		37.8%	37.8%	28.8%	28.8%	35.0%	20.9%	33.3%
<i>New W/H Customers</i>		1,510	2,830	2,355	2,247	3,639	3,386	4,174
<i>Adjusted Change in W/H Cust.</i>		-5,878	-20,690	-11,434	-12,026	-4,768	-8,851	-7,906
<i>Percent Change</i>		-3.1%	-11.2%	-6.9%	-7.7%	-3.2%	-6.1%	-5.6%
<i>W/H Switching Rate / Year</i>		-3.1%	-5.6%	-3.4%	-3.8%	-1.6%	-2.0%	-2.8%

Assumptions for Forecast:

- (1) Without CMP intervention, we would lose 5% of our W/H customers every year
- (2) With CMP intervention, we will retain 44% of potential W/H switchers
- (3) Penetration rate for W/H in new homes = 33.3%

Prospectus for Electric Water Heating

Before Customer Retention

	2004	2005	2006	2007	2008	2009	2010	2011
No. of Customers								
<i>Existing Main Source W/H</i>	140,045	138,191	136,126	129,320	122,854	116,711	110,876	105,332
<i>New W/H Customers</i>				1,889	3,677	5,421	7,150	8,869
<i>Total Customers</i>	140,045	138,191	136,126	131,209	126,530	122,132	118,025	114,201
<i>% Saturation</i>	33.9%	33.0%	32.0%	30.5%	29.0%	27.7%	26.4%	25.3%
Residential Sales (MWh)								
<i>Existing Main Source W/H</i>	581,527	576,950	559,498	513,842	475,470	446,282	420,398	395,116
<i>New W/H Customers</i>		0	0	7,506	14,229	20,728	27,109	33,270
<i>Total Water Heating</i>	581,527	576,950	559,498	521,348	489,699	467,010	447,507	428,386
Potential Losses								
<i>Loss Rate for Main Source W/H</i>				5%	5%	5%	5%	5%
<i>Main Source W/H Switchers</i>				6,806	6,466	6,143	5,836	5,544
<i>... Cum. Switchers 2004+</i>				6,806	13,272	19,415	25,251	30,794
<i>Est. MWh Lost, Main Source</i>				27,044	25,025	23,489	22,126	20,796
<i>... Cum. MWh Lost, Main Source</i>				27,044	52,069	75,558	97,684	118,479

After Customer Retention

Fall 2006 Assumptions	2004	2005	2006	2007	2008	2009	2010	2011
Total Customers Retained				2,995	2,845	2,703	2,568	2,439
<i>... % of Potential Switchers</i>				44%	44%	44%	44%	44%
<i>... Cum. Customers Retained</i>				2,995	5,840	8,543	11,110	13,549
<i>kWh per W/H Switcher, Main</i>				3,973	3,870	3,824	3,792	3,751
<i>Cum. MWh Retained</i>				11,900	22,601	32,665	42,126	50,826
Main Source W/H								
<i>Total Customers</i>		138,191	136,126	134,203	132,370	130,674	129,136	127,751
<i>% Saturation</i>		33.0%	32.0%	31.2%	30.4%	29.6%	28.9%	28.3%
<i>... Existing</i>		138,191	136,126	132,315	128,694	125,254	121,986	118,881
<i>Total W/H Sales (MWh)</i>		576,950	559,498	533,248	512,301	499,675	489,633	479,212
<i>... Existing</i>		576,950	559,498	525,742	498,071	478,947	462,524	445,942
Net Impact (MWh)				11,900	22,601	32,665	42,126	50,826

Prospectus for Electric Space Heating

	<u>Before Customer Retention</u>							
	2004	2005	2006	2007	2008	2009	2010	2011
No. of Customers								
<i>Main Source S/H</i>	13,091	13,080	13,054	13,027	12,989	12,946	12,903	12,859
<i>Supplemental S/H</i>	51,228	56,194	61,244	62,320	63,359	64,385	65,410	66,438
<i>Total Customers</i>	64,318	69,273	74,298	75,347	76,348	77,331	78,313	79,297
<i>% Saturation</i>	15.6%	16.5%	17.5%	17.5%	17.5%	17.5%	17.5%	17.6%
Residential Sales (MWh)								
<i>Main Source S/H</i>	125,130	126,226	115,568	122,084	121,180	121,874	122,912	123,587
<i>Supplemental S/H</i>	49,276	54,571	54,562	58,771	59,482	60,991	62,701	64,254
<i>Total Space Heating</i>	174,405	180,797	170,130	180,856	180,663	182,865	185,613	187,841
<i>Fossil Heating Auxillaries (MWh)</i>	214,498	218,957	202,912	217,420	218,885	223,240	228,273	232,671
<i>... Customers</i>	378,801	383,921	388,760	394,459	399,866	405,146	410,382	415,589
<i>... Average Use (kWh)</i>	566	570	522	551	547	551	556	560
Potential Losses								
<i>Loss Rate for Main Source</i>				1.9%	1.9%	1.9%	1.9%	1.9%
<i>Main Source S/H Switchers</i>				27	38	43	43	44
<i>... Cum. Switchers 2004+</i>				27	65	107	151	195
<i>Est. MWh Lost, Main Source</i>				251	356	400	414	421
<i>... Cum. MWh Lost, Main Source</i>				251	607	1,007	1,422	1,842

	<u>After Customer Retention</u>							
Fall 2006 Assumptions	2004	2005	2006	2007	2008	2009	2010	2010
<i>S/H Retention Rate, Main Source</i>				0%	0%	0%	0%	0%
<i>... Switchers Retained - Main</i>				0	0	0	0	0
<i>... Cum. Cust. Retained - Main</i>				0	0	0	0	0
<i>kWh per S/H Switcher, Main</i>				9,372	9,329	9,414	9,526	9,511
<i>Cum. MWh Retained</i>				0	0	0	0	0
No. of Customers								
<i>Main Source S/H</i>				13,027	12,989	12,946	12,903	12,859
<i>Supplemental S/H</i>				62,320	63,359	64,385	65,410	66,438
<i>Total Customers</i>				75,347	76,348	77,331	78,313	79,297
<i>% Saturation</i>				17.5%	17.5%	17.5%	17.5%	17.6%
Residential Sales (MWh)								
<i>Main Source S/H</i>				122,084	121,180	121,874	122,912	123,587
<i>Supplemental S/H</i>				58,771	59,482	60,991	62,701	64,254
<i>Total Space Heating</i>				180,856	180,663	182,865	185,613	187,841
<i>Lost FHA sales (MWh)</i>				0	0	0	0	0
Net Impact (MWh)				0	0	0	0	0

Adjustments to the Forecast related to the Increased Availability of Natural Gas

	1999	2000	2001	2002	2003	2004	2005	2006	2007	2008	2009	2010	2011
Total MWh Lost									0.0	0.0	0.0	0.0	0.0
<i>Space Heating</i>													
<i>Water Heating</i>													
<i>Range</i>													
Average kWh per Customer													
<i>Space Heating</i>									9,372	9,329	9,414	9,526	9,611
<i>Water Heating</i>									3,973	3,870	3,824	3,792	3,751
<i>Range</i>									487	484	487	492	496
Number of Customers Lost													
<i>Space Heating</i>									0	0	0	0	0
<i>Water Heating</i>									0	0	0	0	0
<i>Range</i>									0	0	0	0	0
Gains re to FHA													
Customers									0	0	0	0	0
kWh/Customer									569	566	570	522	551
Sales (MWh)									0.0	0.0	0.0	0.0	0.0
Net Sales Lost (MWh)									0.0	0.0	0.0	0.0	0.0

Outlook for Residential Appliances, Fall 2006

End Uses	1995	1996	1997	1998	1999	2000	2001	2002	2003	2004	2005	2006	2007	2008	2009	2010	2011	CAGR 05-11
Main Source W/H	165,450	160,954	156,209	151,266	146,583	146,074	145,221	143,457	141,713	140,045	138,191	136,126	134,203	132,370	130,674	129,136	127,751	-1.3%
... Existing W/H	165,450	160,954	156,209	151,266	146,583	146,074	145,221	143,457	141,713	140,045	138,191	136,126	132,315	128,694	125,254	121,986	118,881	-2.5%
... New W/H Cust.													1,889	3,677	5,421	7,150	8,869	
Refrigerators	415,414	422,289	428,915	443,198	458,881	449,024	437,896	440,781	443,961	447,638	455,686	463,462	469,391	474,983	480,425	485,812	491,161	1.3%
Lighting	368,978	373,097	376,952	380,639	385,339	390,676	395,267	400,643	406,366	412,626	418,887	424,863	430,535	435,904	441,142	446,334	451,497	1.3%
Clothes Dryers	286,788	295,213	303,541	309,365	316,074	320,452	324,218	329,162	334,405	340,107	343,383	346,369	351,425	356,242	360,964	365,659	370,341	1.3%
Color TV	635,011	651,613	667,959	689,148	712,491	736,279	759,012	777,716	797,324	818,238	823,951	828,907	839,975	850,448	860,667	870,797	880,871	1.1%
Digital TV	0	0	0	0	0	4,863	9,841	13,881	18,042	22,344	33,364	44,674	66,195	88,205	110,704	133,699	157,189	29.5%
Computers	186,140	179,637	172,823	196,591	221,368	264,869	308,891	335,796	363,620	392,604	396,885	400,847	425,961	451,280	476,951	503,051	529,595	4.9%
Range	314,950	313,989	312,710	317,672	323,521	325,658	327,113	337,572	348,489	360,047	378,705	397,491	403,788	409,826	415,765	421,685	427,602	2.0%
Microwave	337,246	343,062	348,681	358,753	369,925	382,277	394,081	401,712	409,752	418,403	418,259	417,640	428,383	438,955	449,523	460,170	470,912	2.0%
Fossil Heat Aux.	319,544	327,402	335,120	342,014	349,897	353,962	357,331	364,061	371,158	378,801	383,921	388,760	394,459	399,866	405,146	410,382	415,589	1.3%
Main Source S/H	16,503	15,194	13,844	13,218	12,610	10,636	8,587	10,039	11,537	13,091	13,080	13,054	13,027	12,989	12,946	12,903	12,859	-0.3%
Supplemental S/H	36,953	32,888	28,705	31,270	33,968	34,047	34,052	39,590	45,303	51,228	56,194	61,244	62,320	63,359	64,385	65,410	66,438	2.8%
Freezers	162,553	164,741	166,820	165,026	163,596	163,908	163,858	161,413	158,977	156,612	158,570	160,407	160,052	159,519	158,877	158,158	157,369	-0.1%
Water Pumps	131,070	136,637	142,196	157,670	173,875	176,283	178,354	187,191	196,366	205,993	204,302	202,330	210,586	218,835	227,155	235,586	244,136	3.0%
Clothes Washers	335,760	335,404	334,724	341,043	348,337	360,975	373,122	378,865	384,954	391,572	400,027	408,283	417,135	425,780	434,381	443,020	451,712	2.0%
Dishwashers	168,890	176,372	183,849	190,025	196,802	203,826	210,569	223,048	235,987	249,525	255,615	261,599	271,506	281,387	291,341	301,420	311,635	3.4%
Hot Tubs & Spas	8,671	11,566	14,513	15,797	17,148	15,236	13,241	15,158	17,135	19,187	20,735	22,305	23,464	24,629	25,807	27,003	28,219	5.3%
Pool Pumps	26,031	29,120	32,248	32,183	32,195	35,376	38,558	39,350	40,183	41,077	39,815	38,471	39,932	41,389	42,857	44,343	45,850	2.4%
Room A/C	121,265	129,520	137,833	144,319	151,303	159,259	167,060	210,465	255,191	301,485	332,240	363,534	393,617	424,069	455,016	486,526	518,612	7.7%
Central A/C	4,677	5,662	6,663	7,108	7,582	9,445	11,334	12,290	13,278	14,308	16,410	18,556	19,966	21,392	22,840	24,314	25,814	7.8%
Dehumidifiers	55,116	55,358	55,553	64,471	73,744	70,078	66,158	80,947	96,190	111,976	118,493	125,069	132,551	140,089	147,727	155,491	163,386	5.5%
Humidifiers	86,230	86,633	86,963	91,049	95,448	106,733	118,066	125,949	134,114	142,645	139,783	136,678	143,153	149,646	156,208	162,867	169,628	3.3%
Other Misc.	368,978	373,097	376,952	380,639	385,339	390,676	395,267	400,643	406,366	412,626	418,887	424,863	430,535	435,904	441,142	446,334	451,497	1.3%
Seasonal	92,244	93,274	94,238	95,160	96,335	97,669	98,817	100,161	101,591	103,157	104,722	106,216	107,634	108,976	110,285	111,583	112,874	1.3%
Year-round Cust.	368,978	373,097	376,952	380,639	385,339	390,676	395,267	400,643	406,366	412,626	418,887	424,863	430,535	435,904	441,142	446,334	451,497	1.3%
Total Residential	461,222	466,371	471,190	475,799	481,674	488,345	494,084	500,804	507,957	515,783	523,609	531,079	538,169	544,880	551,427	557,917	564,372	1.3%

Forecast for Residential End-Use Saturations, Fall 2006

<u>End Uses</u>	1995	1996	1997	1998	1999	2000	2001	2002	2003	2004	2005	2006	2007	2008	2009	2010	2011
Main Source W/H	44.8%	43.1%	41.4%	39.7%	38.0%	37.4%	36.7%	35.8%	34.9%	33.9%	33.0%	32.0%	31.2%	30.4%	29.6%	28.9%	28.3%
Refrigerators	112.6%	113.2%	113.8%	116.4%	119.1%	114.9%	110.8%	110.0%	109.3%	108.5%	108.8%	109.1%	109.0%	109.0%	108.9%	108.8%	108.8%
Lighting	100.0%	100.0%	100.0%	100.0%	100.0%	100.0%	100.0%	100.0%	100.0%	100.0%	100.0%	100.0%	100.0%	100.0%	100.0%	100.0%	100.0%
Clothes Dryers	77.7%	79.1%	80.5%	81.3%	82.0%	82.0%	82.0%	82.2%	82.3%	82.4%	82.0%	81.5%	81.6%	81.7%	81.8%	81.9%	82.0%
Color TV	172.1%	174.7%	177.2%	181.1%	184.9%	188.5%	192.0%	194.1%	196.2%	198.3%	196.7%	195.1%	195.1%	195.1%	195.1%	195.1%	195.1%
Digital TV	0.0%	0.0%	0.0%	0.0%	0.0%	1.2%	2.5%	3.5%	4.4%	5.4%	8.0%	10.5%	15.4%	20.2%	25.1%	30.0%	34.8%
Computers	50.4%	48.1%	45.8%	51.6%	57.4%	67.8%	78.1%	83.8%	89.5%	95.1%	94.7%	94.3%	98.9%	103.5%	108.1%	112.7%	117.3%
Range	85.4%	84.2%	83.0%	83.5%	84.0%	83.4%	82.8%	84.3%	85.8%	87.3%	90.4%	93.6%	93.8%	94.0%	94.2%	94.5%	94.7%
Microwave	91.4%	92.0%	92.5%	94.3%	96.0%	97.9%	99.7%	100.3%	100.8%	101.4%	99.9%	98.3%	99.5%	100.7%	101.9%	103.1%	104.3%
Fossil Heat Aux.	86.6%	87.8%	88.9%	89.9%	90.8%	90.6%	90.4%	90.9%	91.3%	91.8%	91.7%	91.5%	91.6%	91.7%	91.8%	91.9%	92.0%
Main Source S/H	4.5%	4.1%	3.7%	3.5%	3.3%	2.7%	2.2%	2.5%	2.8%	3.2%	3.1%	3.1%	3.0%	3.0%	2.9%	2.9%	2.8%
Supplemental S/H	10.0%	8.8%	7.6%	8.2%	8.8%	8.7%	8.6%	9.9%	11.1%	12.4%	13.4%	14.4%	14.5%	14.5%	14.6%	14.7%	14.7%
Freezers	44.1%	44.2%	44.3%	43.4%	42.5%	42.0%	41.5%	40.3%	39.1%	38.0%	37.9%	37.8%	37.2%	36.6%	36.0%	35.4%	34.9%
Water Pumps	35.5%	36.6%	37.7%	41.4%	45.1%	45.1%	45.1%	46.7%	48.3%	49.9%	48.8%	47.6%	48.9%	50.2%	51.5%	52.8%	54.1%
Clothes Washers	91.0%	89.9%	88.8%	89.6%	90.4%	92.4%	94.4%	94.6%	94.7%	94.9%	95.5%	96.1%	96.9%	97.7%	98.5%	99.3%	100.0%
Dishwashers	45.8%	47.3%	48.8%	49.9%	51.1%	52.2%	53.3%	55.7%	58.1%	60.5%	61.0%	61.6%	63.1%	64.6%	66.0%	67.5%	69.0%
Hot Tubs & Spas	2.4%	3.1%	3.9%	4.2%	4.5%	3.9%	3.4%	3.8%	4.2%	4.7%	5.0%	5.3%	5.5%	5.7%	5.9%	6.1%	6.3%
Pool Pumps	7.1%	7.8%	8.6%	8.5%	8.4%	9.1%	9.8%	9.8%	9.9%	10.0%	9.5%	9.1%	9.3%	9.5%	9.7%	9.9%	10.2%
Room A/C	32.9%	34.7%	36.6%	37.9%	39.3%	40.8%	42.3%	52.5%	62.8%	73.1%	79.3%	85.6%	91.4%	97.3%	103.1%	109.0%	114.9%
Central A/C	1.3%	1.5%	1.8%	1.9%	2.0%	2.4%	2.9%	3.1%	3.3%	3.5%	3.9%	4.4%	4.6%	4.9%	5.2%	5.4%	5.7%
Dehumidifiers	14.9%	14.8%	14.7%	16.9%	19.1%	17.9%	16.7%	20.2%	23.7%	27.1%	28.3%	29.4%	30.8%	32.1%	33.5%	34.8%	36.2%
Humidifiers	23.4%	23.2%	23.1%	23.9%	24.8%	27.3%	29.9%	31.4%	33.0%	34.6%	33.4%	32.2%	33.3%	34.3%	35.4%	36.5%	37.6%
Other Misc.	100.0%	100.0%	100.0%	100.0%	100.0%	100.0%	100.0%	100.0%	100.0%	100.0%	100.0%	100.0%	100.0%	100.0%	100.0%	100.0%	100.0%
Seasonal	25.0%	25.0%	25.0%	25.0%	25.0%	25.0%	25.0%	25.0%	25.0%	25.0%	25.0%	25.0%	25.0%	25.0%	25.0%	25.0%	25.0%

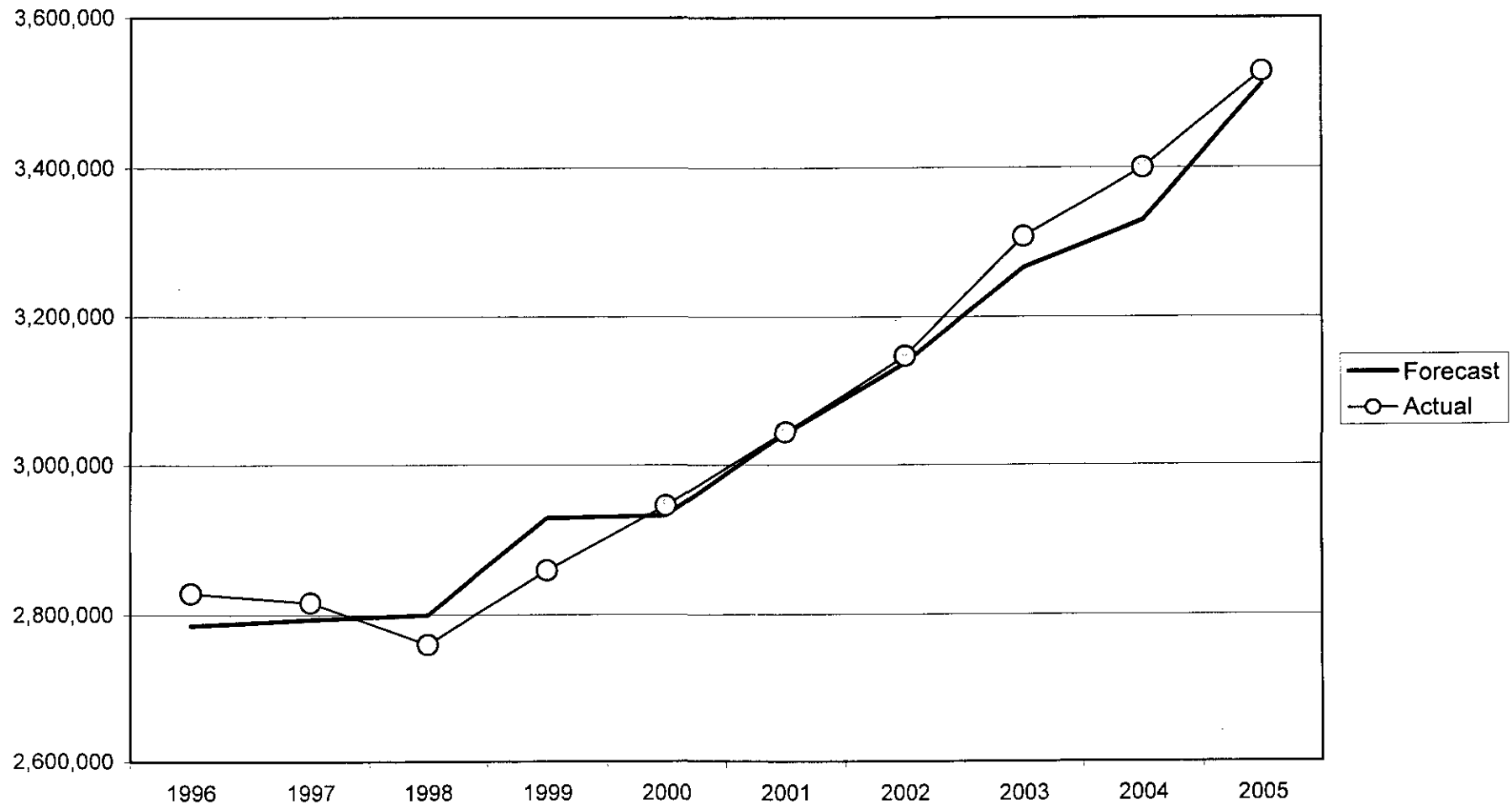
Residential Sales Outlook (MWh) by End Use, Fall 2006 (no adjustments)

End Uses	1995	1996	1997	1998	1999	2000	2001	2002	2003	2004	2005	2006	2007	2008	2009	2010	2011	CAGR 05-11
Main Source W/H	595,619	585,394	572,785	561,507	552,397	560,803	574,533	575,445	579,702	581,527	576,950	559,498	533,248	512,301	499,675	489,633	479,212	-3.0%
... Existing W/H	595,619	585,394	572,785	561,507	552,397	560,803	574,533	575,445	579,702	581,527	576,950	559,498	525,742	498,071	478,947	462,524	445,942	-4.2%
... New W/H Cust.													7,506	14,229	20,728	27,109	33,270	
Refrigerators	407,105	401,132	397,684	404,191	414,738	403,342	392,871	382,094	375,640	373,116	371,535	363,261	351,967	344,038	341,738	341,068	340,527	-1.4%
Lighting	263,819	267,372	270,090	273,808	279,067	285,842	295,539	301,391	309,351	319,331	326,264	324,999	321,125	319,149	321,347	324,411	320,420	-0.3%
Clothes Dryers	213,083	221,490	229,503	236,824	245,812	254,092	265,200	273,371	283,711	295,232	302,112	302,439	300,805	301,169	305,623	311,046	315,643	0.7%
Color TV	89,536	91,559	93,302	96,088	99,443	103,225	108,121	110,751	114,166	118,344	119,172	117,332	115,527	114,414	114,799	115,487	115,812	-0.5%
Digital TV	0	0	0	0	0	1,547	3,181	4,486	5,863	7,334	10,952	14,352	20,662	26,931	33,512	40,242	46,902	27.4%
Computers	29,038	27,926	26,709	30,327	34,183	41,084	48,682	52,906	57,604	62,824	63,510	62,776	64,818	67,171	70,385	73,813	77,035	3.3%
Range	130,074	131,281	132,041	136,022	140,869	144,700	150,027	157,235	165,804	175,784	187,834	196,012	196,546	198,230	202,552	207,509	211,914	2.0%
Microwave	27,317	28,183	28,980	30,291	31,820	33,616	35,834	37,164	38,792	40,720	41,428	41,203	41,792	42,631	44,051	45,632	47,114	2.2%
Fossil Heat Aux.	155,092	161,656	166,824	148,886	161,454	178,884	180,695	185,714	211,127	214,498	218,957	202,912	217,420	218,885	223,240	228,273	232,671	1.0%
Main Source S/H	132,319	124,237	114,395	95,742	97,053	89,871	72,776	86,037	110,520	125,130	126,226	115,568	122,084	121,180	121,874	122,912	123,587	-0.4%
Supplemental S/H	29,816	27,061	23,869	22,793	26,307	28,950	29,041	34,142	43,670	49,276	54,571	54,562	58,771	59,482	60,991	62,701	64,254	2.8%
Freezers	110,048	109,766	109,442	107,275	105,547	105,392	106,194	103,566	102,095	101,342	102,661	101,990	99,260	97,510	97,109	96,934	96,401	-1.0%
Water Pumps	35,389	37,326	39,206	44,058	49,378	51,056	53,288	56,765	60,790	65,399	65,855	64,804	66,638	68,669	71,751	75,120	78,352	2.9%
Clothes Washers	30,218	30,019	29,582	29,723	29,868	30,595	31,500	31,172	31,192	31,489	31,706	31,342	28,412	26,426	25,160	24,211	23,411	-4.9%
Dishwashers	28,880	29,876	30,650	31,260	32,080	33,098	34,363	35,912	37,822	40,119	40,954	40,949	41,593	42,543	44,069	45,856	47,594	2.5%
Hot Tubs & Spas	13,006	17,553	22,230	24,522	27,054	24,516	21,979	25,536	29,470	33,842	37,132	39,690	41,188	42,935	45,286	47,836	50,313	5.2%
Pool Pumps	18,828	12,942	15,090	24,595	31,033	18,825	35,224	38,828	36,186	25,827	46,009	33,360	32,384	33,335	34,745	36,282	37,768	-3.2%
Room A/C	22,782	14,790	16,392	27,784	36,448	20,973	37,339	50,238	55,165	45,269	91,345	74,815	75,526	80,610	86,870	93,633	100,282	1.6%
Central A/C	2,636	1,940	2,377	4,105	5,479	3,731	7,600	8,801	8,611	6,445	13,535	11,456	11,493	12,199	13,082	14,038	14,975	1.7%
Dehumidifiers	31,064	19,172	20,255	38,393	55,389	29,058	47,093	62,239	67,497	54,861	106,696	84,509	83,763	87,918	93,324	99,162	104,873	-0.3%
Humidifiers	8,623	8,765	8,880	9,423	10,039	11,449	13,065	14,146	15,377	16,773	16,688	16,214	16,752	17,392	18,274	19,234	20,163	3.2%
Other Misc.	273,532	279,841	285,363	292,031	300,459	310,667	324,249	333,580	345,403	359,685	370,729	373,624	373,502	375,559	382,583	390,762	397,851	1.2%
Seasonal	154,324	156,265	157,941	160,287	163,642	167,871	173,599	176,366	180,494	185,525	188,890	188,185	185,338	183,808	184,843	186,494	187,396	-0.1%
Ice Storm				(30,045)														
Energy Conservation													(27,819)	(47,070)	(67,436)	(90,017)	(113,791)	
Total Residential	2,802,150	2,785,546	2,793,590	2,799,890	2,929,560	2,933,186	3,041,995	3,137,885	3,266,053	3,329,684	3,511,710	3,415,852	3,372,694	3,347,414	3,369,448	3,402,280	3,420,680	-0.4%
% Change		-0.6%	0.3%	0.2%	4.6%	0.1%	3.7%	3.2%	4.1%	1.9%	5.5%	-2.7%	-1.3%	-0.7%	0.7%	1.0%	0.5%	
Regression Eqn. With DSM										3,399,804	3,529,120	3,465,279	3,445,637	3,402,082	3,406,438	3,450,239	3,476,161	-0.3%
Regression Eqn. (No DSM)	2,802,150	2,785,546	2,793,590	2,799,890	2,929,560	2,933,186	3,041,995	3,137,885	3,308,096	3,399,804	3,529,120	3,465,279	3,473,456	3,449,152	3,473,874	3,540,256	3,589,953	0.3%
% Change		-0.6%	0.3%	0.2%	4.6%	0.1%	3.7%	3.2%	5.4%	2.8%	3.8%	-1.8%	0.2%	-0.7%	0.7%	1.9%	1.4%	
No Scaling Factor	1.0000	1.0000	1.0000	1.0000	1.0000	1.0000	1.0000	1.0000	1.0000	1.0000	1.0000	1.0000	1.0000	1.0000	1.0000	1.0000	1.0000	
Actual Sales																		
Equation, w/o DSM	2,802,150	2,828,906	2,816,506	2,760,314	2,859,444	2,946,738	3,043,786	3,147,384	3,308,096	3,399,804	3,529,120	3,465,279	3,473,456	3,449,152	3,473,874	3,540,256	3,589,953	0.3%
End Use w/o DSM	2,802,150	2,785,546	2,793,590	2,799,890	2,929,560	2,933,186	3,041,995	3,137,885	3,266,053	3,329,684	3,511,710	3,415,852	3,400,513	3,394,484	3,436,884	3,492,297	3,534,471	0.1%
Scaling Factor	1.0000	1.0156	1.0082	0.9859	0.9761	1.0046	1.0006	1.0030	1.0129	1.0211	1.0050	1.0145	1.0215	1.0161	1.0108	1.0137	1.0157	
		1.6%	0.8%	1.4%	2.4%	0.5%	0.1%	0.3%	1.3%	2.1%	0.5%	1.4%	2.1%	1.6%	1.1%	1.4%	1.5%	
Forecast				2,790,359														
Actual				2,829,935														
				0.9860														

Equation formulations:

No Debt	3,471,975	3,425,790	3,412,697	3,431,942	3,456,775	3,521,295
w Debt	3,481,888	3,479,114	3,489,140	3,501,739	3,512,352	3,547,032
difference	9,913	53,323	76,443	69,797	55,577	25,737
% diff.	0.3%	1.6%	2.2%	2.0%	1.6%	0.7%

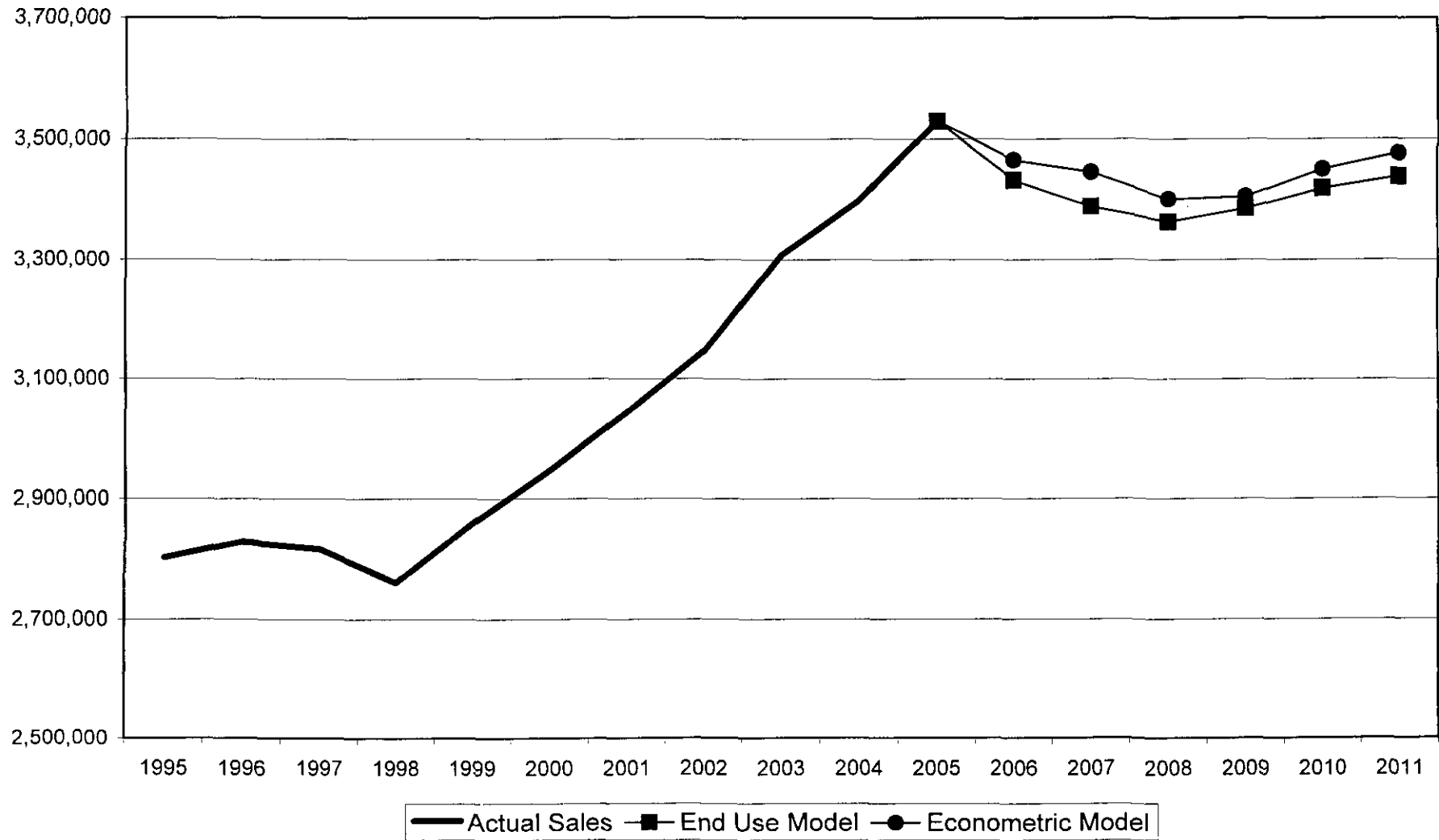
Forecast Accuracy of End Use Model, 1996-2005 (Mean Absolute Error = 1.1%)



Residential Sales Outlook (MWh) by End Use, Fall 2006

<u>End Uses</u>	1995	1996	1997	1998	1999	2000	2001	2002	2003	2004	2005	2006	2007	2008	2009	2010	2011	CAGR 05-11
Main Source W/H	595,619	594,507	577,484	553,654	539,176	563,394	574,871	577,187	587,165	593,771	579,811	567,594	544,686	520,551	505,053	496,357	486,735	-2.9%
... Existing W/H	595,619	594,507	577,484	553,654	539,176	563,394	574,871	577,187	587,165	593,771	579,811	567,594	537,019	506,092	484,102	468,875	452,942	-4.0%
... New W/H Cust.													7,667	14,459	20,951	27,482	33,792	
Refrigerators	407,105	407,376	400,946	398,539	404,812	405,205	393,103	383,251	380,476	380,972	373,377	368,517	359,517	349,579	345,416	345,752	345,873	-1.3%
Lighting	263,819	271,534	272,305	269,979	272,388	287,162	295,713	302,304	313,333	326,055	327,882	329,702	328,013	324,289	324,806	328,866	325,450	-0.1%
Clothes Dryers	213,083	224,937	231,386	233,512	239,929	255,266	265,356	274,198	287,363	301,449	303,610	306,815	307,257	306,019	308,912	315,317	320,598	0.9%
Color TV	89,536	92,984	94,068	94,744	97,063	103,701	108,184	111,086	115,636	120,836	119,763	119,030	118,005	116,257	116,034	117,073	117,629	-0.3%
Digital TV	0	0	0	0	0	1,555	3,183	4,500	5,938	7,489	11,006	14,559	21,105	27,365	33,872	40,794	47,638	27.7%
Computers	29,038	28,361	26,928	29,903	33,365	41,274	48,711	53,066	58,346	64,147	63,825	63,684	66,208	68,253	71,143	74,827	78,244	3.5%
Range	130,074	133,325	133,124	134,119	137,497	145,368	150,116	157,711	167,939	179,486	188,765	198,848	200,762	201,423	204,732	210,359	215,240	2.2%
Microwave	27,317	28,621	29,218	29,867	31,058	33,771	35,856	37,277	39,291	41,578	41,634	41,799	42,688	43,318	44,526	46,259	47,853	2.3%
Fossil Heat Aux.	155,092	164,173	168,193	146,803	157,589	179,710	180,802	186,276	213,845	219,015	220,042	205,848	222,084	222,410	225,643	231,407	236,323	1.2%
Main Source S/H	132,319	126,171	115,333	94,403	94,731	90,287	72,819	86,298	111,943	127,765	126,852	117,241	124,703	123,132	123,185	124,600	125,527	-0.2%
Supplemental S/H	29,816	27,482	24,065	22,474	25,678	29,084	29,058	34,245	44,233	50,313	54,842	55,351	60,032	60,440	61,648	63,562	65,263	2.9%
Freezers	110,048	111,475	110,339	105,775	103,021	105,879	106,256	103,879	103,409	103,476	103,170	103,466	101,389	99,080	98,154	98,265	97,914	-0.9%
Water Pumps	35,389	37,907	39,528	43,442	48,196	51,292	53,319	56,937	61,572	66,777	66,181	65,742	67,965	69,775	72,523	76,152	79,582	3.1%
Clothes Washers	30,218	30,486	29,825	29,307	29,153	30,736	31,518	31,266	31,593	32,152	31,863	31,796	29,021	26,851	25,430	24,543	23,778	-4.8%
Dishwashers	28,880	30,341	30,901	30,823	31,313	33,251	34,383	36,021	38,309	40,964	41,157	41,542	42,485	43,228	44,544	46,486	48,341	2.7%
Hot Tubs & Spas	13,006	17,826	22,412	24,179	26,406	24,629	21,992	25,614	29,849	34,555	37,316	40,264	42,072	43,626	45,773	48,492	51,103	5.4%
Pool Pumps	18,828	13,144	15,213	24,251	30,290	18,912	35,245	38,946	36,651	26,371	46,237	33,843	33,079	33,872	35,119	36,790	38,361	-3.1%
Room A/C	22,782	15,020	16,527	27,395	35,576	21,070	37,361	50,390	55,875	46,222	91,798	75,898	77,146	81,908	87,805	94,918	101,856	1.7%
Central A/C	2,636	1,970	2,397	4,048	5,348	3,749	7,604	8,827	8,722	6,581	13,602	11,622	11,740	12,395	13,223	14,231	15,210	1.9%
Dehumidifiers	31,064	19,470	20,422	37,856	54,063	29,192	47,121	62,428	68,366	56,016	107,225	85,732	85,560	89,334	94,329	100,524	106,519	-0.1%
Humidifiers	8,623	8,902	8,953	9,291	9,799	11,502	13,073	14,189	15,575	17,126	16,771	16,448	17,112	17,672	18,471	19,499	20,479	3.4%
Other Misc.	273,532	284,197	287,703	287,947	293,268	312,103	324,440	334,590	349,849	367,258	372,567	379,031	381,514	381,807	386,701	396,128	404,096	1.4%
Seasonal Ice Storm	154,324	158,697	159,237	158,046	159,725	168,647	173,701	176,900	182,817	189,431	189,826	190,908	189,314	186,768	186,832	189,055	190,338	0.0%
Energy Conservation				(30,045)									(27,819)	(47,070)	(67,436)	(90,017)	(113,791)	
Total Residential	2,802,150	2,828,906	2,816,506	2,760,314	2,859,444	2,946,738	3,043,786	3,147,384	3,308,096	3,399,804	3,529,120	3,465,279	3,445,637	3,402,082	3,406,438	3,450,239	3,476,161	-0.3%
% Change		1.0%	-0.4%	-2.0%	3.6%	3.1%	3.3%	3.4%	5.1%	2.8%	3.8%	-1.8%	-0.6%	-1.3%	0.1%	1.3%	0.8%	
Regression Eqn. With DSM											3,529,120	3,465,279	3,445,637	3,402,082	3,406,438	3,450,239	3,476,161	-0.3%
Equation, w/o DSM	2,802,150	2,828,906	2,816,506	2,760,314	2,859,444	2,946,738	3,043,786	3,147,384	3,308,096	3,399,804	3,529,120	3,465,279	3,473,456	3,449,152	3,473,874	3,540,256	3,589,953	0.3%
% Change		1.0%	-0.4%	-2.0%	3.6%	3.1%	3.3%	3.4%	5.1%	2.8%	3.8%	-1.8%	0.2%	-0.7%	0.7%	1.9%	1.4%	
Scaling Factors	1.0000	1.0156	1.0082	0.9860	0.9761	1.0046	1.0006	1.0030	1.0129	1.0211	1.0050	1.0145	1.0215	1.0161	1.0108	1.0137	1.0157	

Residential Sales Outlook (MWh), Fall 2006



Annual Usage (kWh) per Appliance (excluding conservation), Fall 2006

<u>End Uses</u>	1995	1996	1997	1998	1999	2000	2001	2002	2003	2004	2005	2006	2007	2008	2009	2010	2011	CAGR 05-11
Main Source W/H	3,600	3,694	3,697	3,660	3,678	3,857	3,959	4,023	4,143	4,240	4,196	4,170	4,059	3,933	3,865	3,844	3,810	-1.6%
... Existing W/H	3,600	3,694	3,697	3,660	3,678	3,857	3,959	4,023	4,143	4,240	4,196	4,170	4,059	3,933	3,865	3,844	3,810	-1.6%
... New W/H Cust.													4,059	3,933	3,865	3,844	3,810	
Refrigerators	980	965	935	899	882	902	898	869	857	851	819	795	766	736	719	712	704	-2.5%
Lighting	715	728	722	709	707	735	748	755	771	790	783	776	762	744	736	737	721	-1.4%
Clothes Dryers	743	762	762	755	759	797	818	833	859	886	884	886	874	859	856	862	866	-0.4%
Color TV	141	143	141	137	136	141	143	143	145	148	145	144	140	137	135	134	134	-1.4%
Digital TV						320	323	324	329	335	330	326	319	310	306	305	303	-1.4%
Computers	156	158	156	152	151	156	158	158	160	163	161	159	155	151	149	149	148	-1.4%
Range	413	425	426	422	425	446	459	467	482	499	498	500	497	491	492	499	503	0.2%
Microwave	81	83	84	83	84	88	91	93	96	99	100	100	100	99	99	101	102	0.3%
Fossil Heat Aux.	485	501	502	429	450	508	506	512	576	578	573	529	563	556	557	564	569	-0.1%
Main Source S/H	8,018	8,304	8,331	7,142	7,512	8,489	8,480	8,596	9,703	9,760	9,698	8,981	9,573	9,480	9,515	9,657	9,762	0.1%
Supplemental S/H	807	836	838	719	756	854	853	865	976	982	976	904	963	954	957	972	982	0.1%
Freezers	677	677	661	641	630	646	648	644	650	661	651	645	633	621	618	621	622	-0.7%
Water Pumps	270	277	278	276	277	291	299	304	314	324	324	325	323	319	319	323	326	0.1%
Clothes Washers	90	91	89	86	84	85	84	83	82	82	80	78	70	63	59	55	53	-6.7%
Dishwashers	171	172	168	162	159	163	163	161	162	164	161	159	156	154	153	154	155	-0.6%
Hot Tubs & Spas	1,500	1,541	1,544	1,531	1,540	1,616	1,661	1,690	1,742	1,801	1,800	1,805	1,793	1,771	1,774	1,796	1,811	0.1%
Pool Pumps	723	451	472	754	941	535	914	990	912	642	1,161	880	828	818	819	830	837	-5.3%
Room A/C	188	116	120	190	235	132	224	239	219	153	276	209	196	193	193	195	196	-5.5%
Central A/C	564	348	360	569	705	397	671	718	657	460	829	626	588	579	579	585	589	-5.5%
Dehumidifiers	564	352	368	587	733	417	712	771	711	500	905	685	645	638	639	646	652	-5.3%
Humidifiers	100	103	103	102	103	108	111	113	116	120	120	120	120	118	118	120	121	0.1%
Other Misc.	741	762	763	756	761	799	821	835	861	890	889	892	886	875	877	888	895	0.1%
Seasonal	1,673	1,701	1,690	1,661	1,658	1,727	1,758	1,766	1,800	1,836	1,813	1,797	1,759	1,714	1,694	1,694	1,686	-1.2%
Year-round Customers	7,176	7,157	7,049	6,837	7,006	7,111	7,261	7,414	7,691	7,780	7,972	7,707	7,563	7,376	7,298	7,307	7,278	-1.5%
% Change		-0.3%	-1.5%	-3.0%	2.5%	1.5%	2.1%	2.1%	3.7%	1.2%	2.5%	-3.3%	-1.9%	-2.5%	-1.1%	0.1%	-0.4%	
All Customers	6,075	6,066	5,977	5,801	5,936	6,034	6,160	6,285	6,513	6,592	6,740	6,525	6,403	6,244	6,177	6,184	6,159	-1.5%
% Change		-0.2%	-1.5%	-2.9%	2.3%	1.6%	2.1%	2.0%	3.6%	1.2%	2.3%	-3.2%	-1.9%	-2.5%	-1.1%	0.1%	-0.4%	

*Note: 1998 estimates by end use have not been adjusted for the ice storm;
2007-2011 estimates by end use have not been adjusted for energy conservation savings.*

Fall 2006 Residential Sales (MWh) Forecast

	Actual		Forecast						CAGR	CAGR
	2004	2005	2006	2007	2008	2009	2010	2011	05-11	06-11
Econometric Model Before Adjustments	3,399,804	3,529,120	3,465,279	3,473,456	3,449,152	3,473,874	3,540,256	3,589,953	0.3%	0.7%
<i>% Change</i>	2.8%	3.8%	-1.8%	0.2%	-0.7%	0.7%	1.9%	1.4%		
LESS										
<i>Energy Management</i>			-	(27,819)	(47,070)	(67,436)	(90,017)	(113,791)		
Total Residential Sales	3,399,804	3,529,120	3,465,279	3,445,637	3,402,082	3,406,438	3,450,239	3,476,161	-0.3%	0.1%
<i>% Change</i>	2.8%	3.8%	-1.8%	-0.6%	-1.3%	0.1%	1.3%	0.8%		
Average Price of Electricity (2000 ¢ / kWh)	10.78	11.72	12.79	13.92	14.08	13.31	12.91	12.51	1.1%	-0.4%
<i>% Change</i>	-5.1%	8.7%	9.1%	8.9%	1.1%	-5.4%	-3.0%	-3.1%		
Number of Customers	515,783	523,609	531,079	538,169	544,880	551,427	557,917	564,372	1.3%	1.2%
<i>Annual Growth</i>	7,826	7,826	7,470	7,091	6,711	6,547	6,490	6,455		
<i>% Change</i>	1.5%	1.5%	1.4%	1.3%	1.2%	1.2%	1.2%	1.2%		
Income (2000 \$) per Year-round Customer	70,547	70,542	69,805	69,532	70,263	71,654	73,002	74,208	0.8%	1.2%
<i>% Change</i>	1.9%	0.0%	-1.0%	-0.4%	1.1%	2.0%	1.9%	1.7%		
Average kWh Use per Customer	6,592	6,740	6,525	6,403	6,244	6,177	6,184	6,159	-1.5%	-1.1%
<i>% Change</i>	1.2%	2.3%	-3.2%	-1.9%	-2.5%	-1.1%	0.1%	-0.4%		
Fall 2005 Forecast		3,481,888	3,465,439	3,466,176	3,469,485	3,462,744	3,480,069			
<i>% Change</i>		2.4%	-0.5%	0.0%	0.1%	-0.2%	0.5%			
Effect of Update		47,232	(160)	(20,538)	(67,403)	(56,306)	(29,830)			
<i>% Difference</i>		1.4%	0.0%	-0.6%	-1.9%	-1.6%	-0.9%			