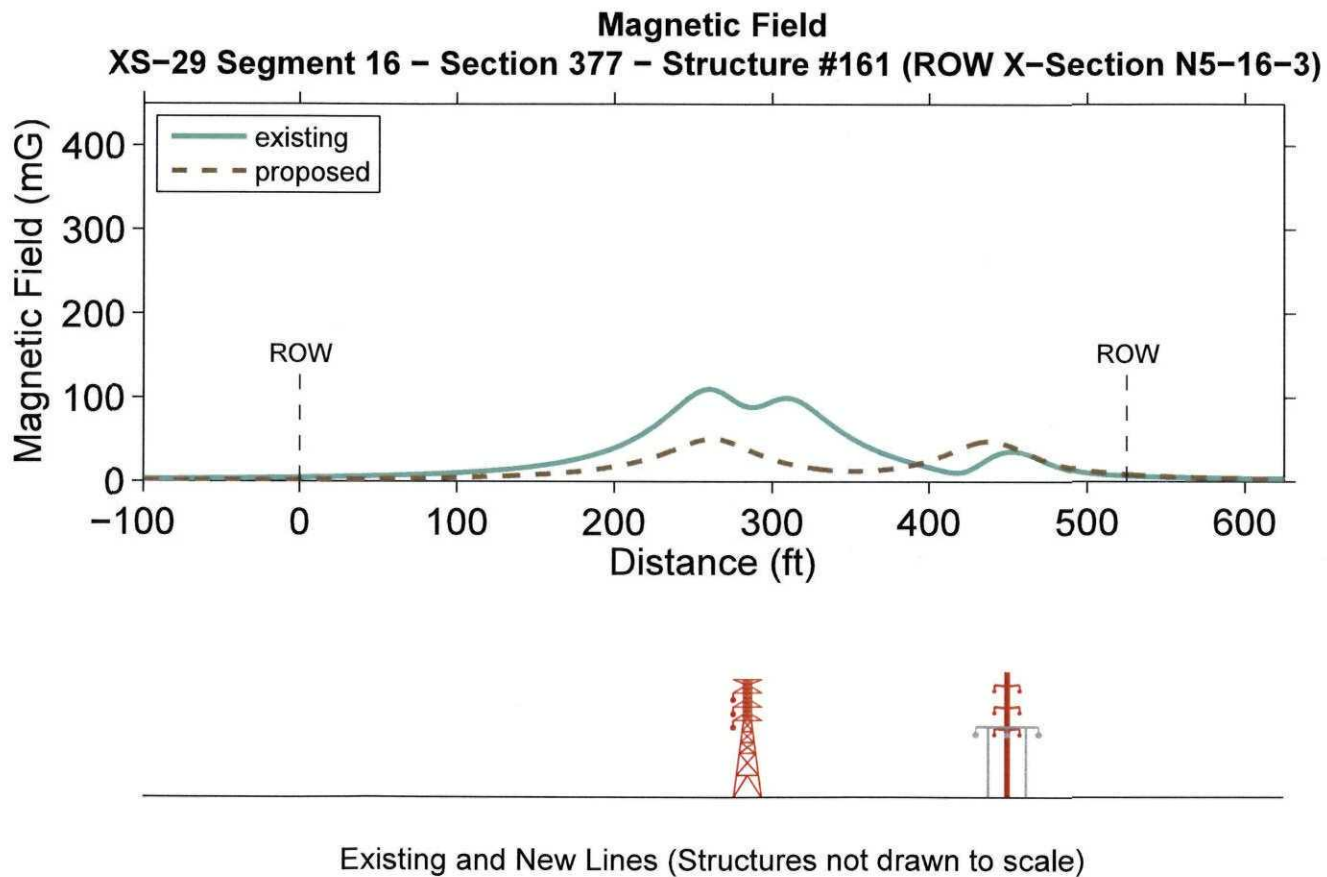


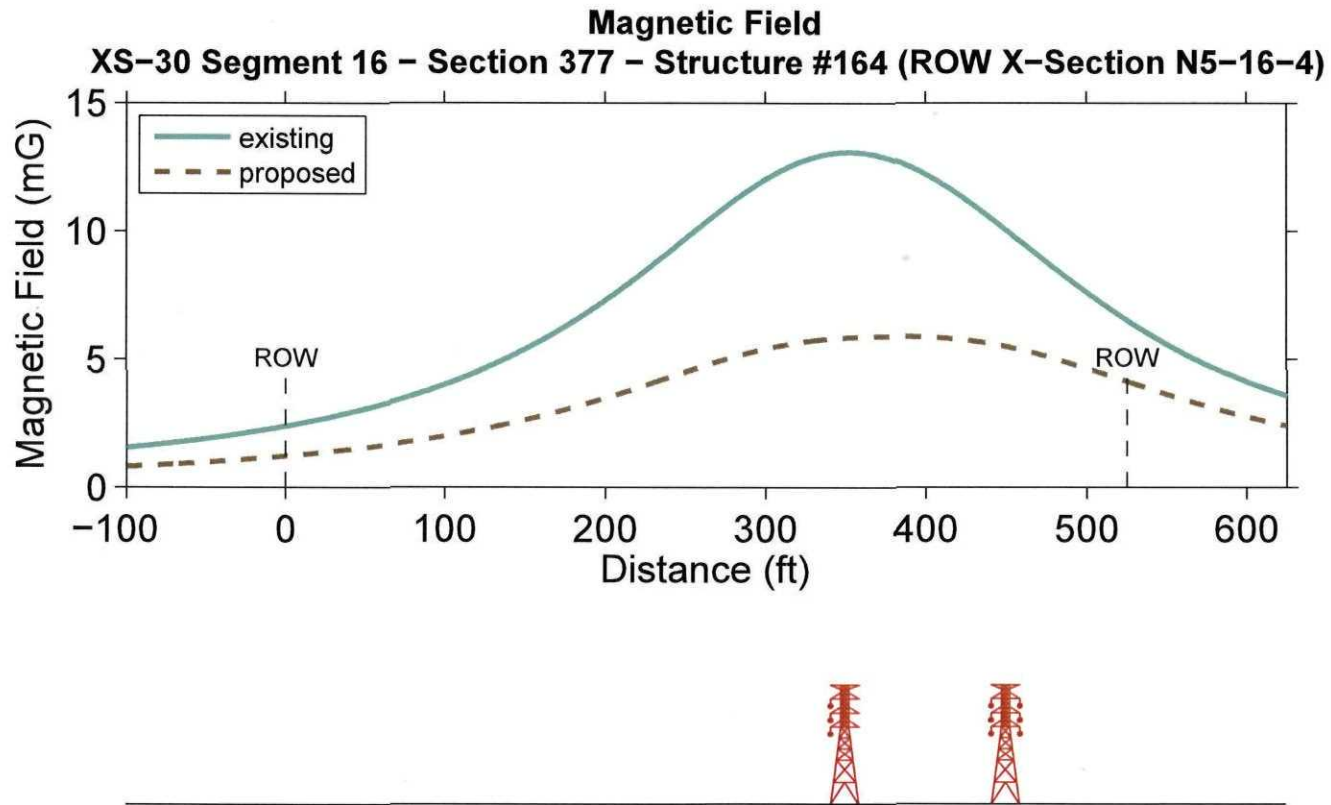
# Maine Power Reliability Project, Segment 16

## Profiles and Summary Tables

Prepared on December 16, 2008.

## Magnetic Fields



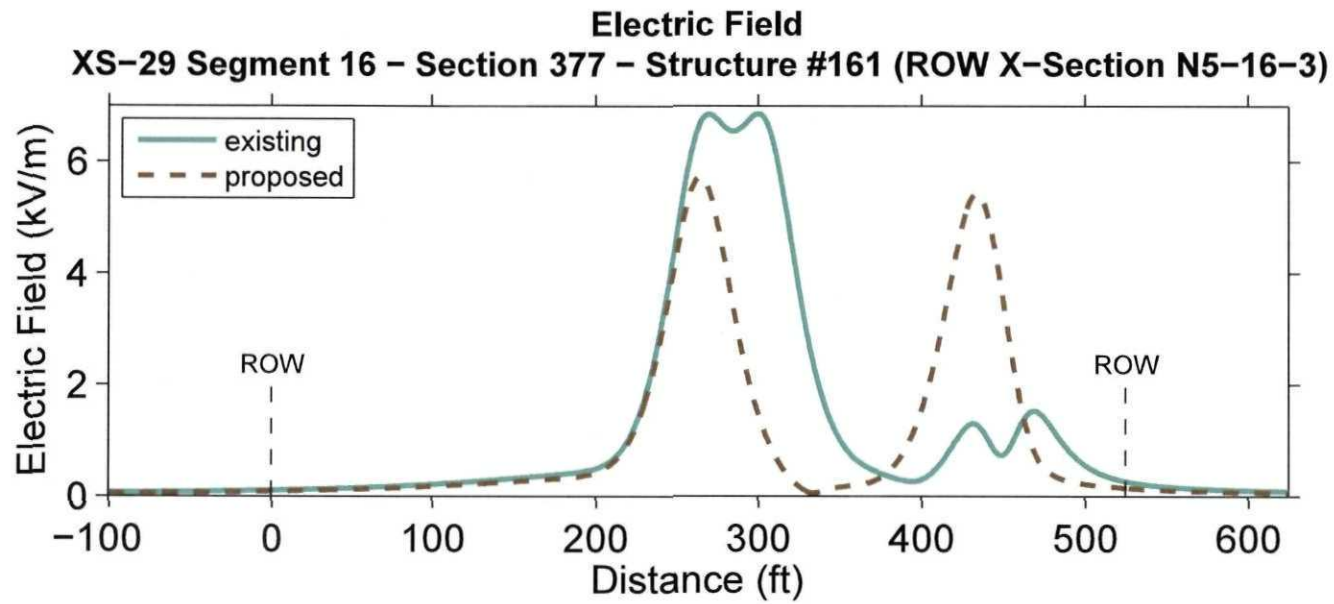


Existing and New Lines (Structures not drawn to scale)

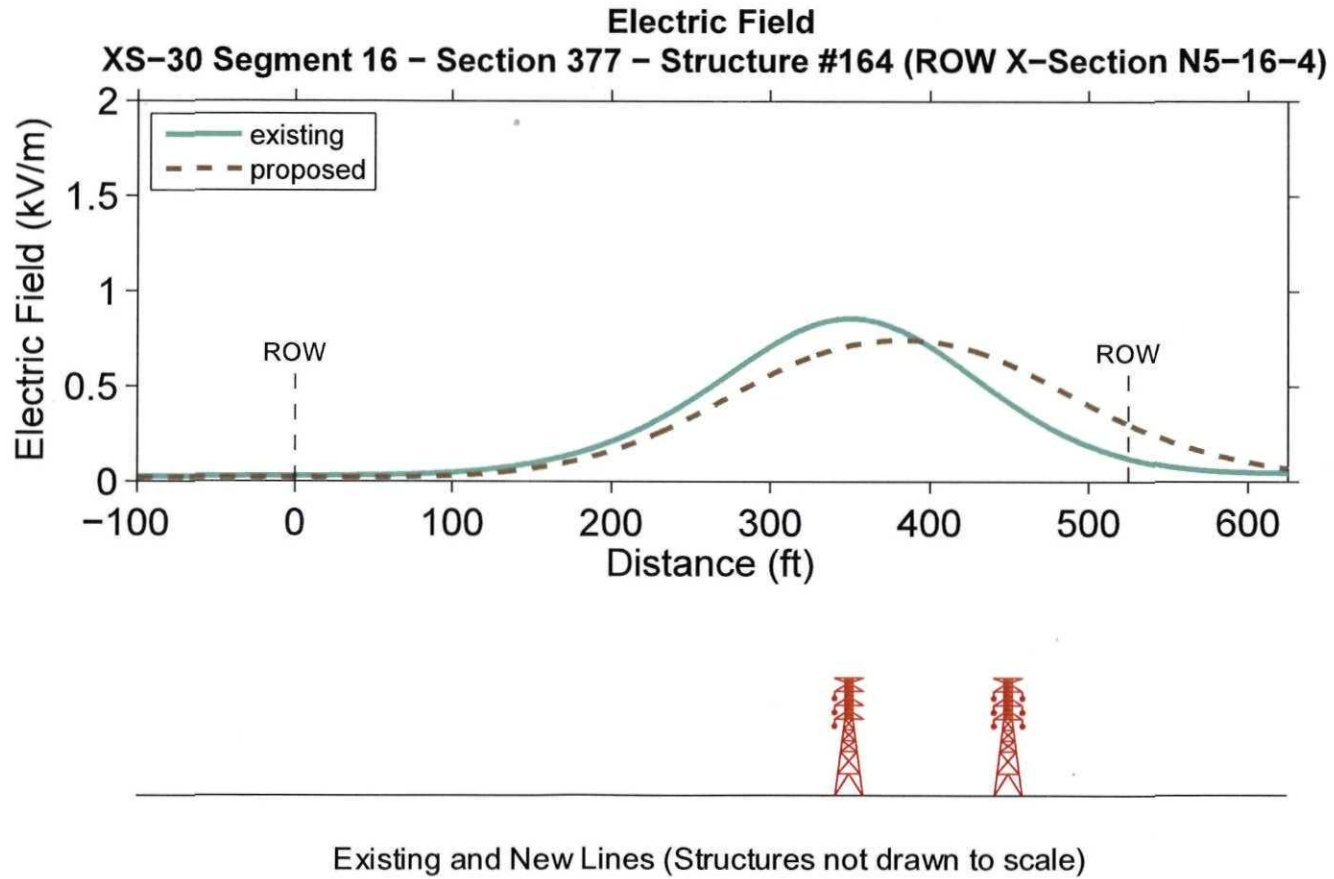
MPRP Average Load – December 16, 2008

Line Section	Configuration	MAGNETIC FIELD (mG) AT LOCATION		
		-ROW edge	Maximum on ROW	+ROW edge
XS-29 Segment 16 - Section 377 - Structure #161 (ROW X-Section N5-16-3)	existing	4.1	109.8	6.3
	proposed	1.8	50.7	8.4
XS-30 Segment 16 - Section 377 - Structure #164 (ROW X-Section N5-16-4)	existing	2.4	13.1	6.5
	proposed	1.2	5.9	4.1

## Electric Fields



Existing and New Lines (Structures not drawn to scale)



MPRP Average Load – December 16, 2008

Line Section	Configuration	ELECTRIC FIELD (kV/m) AT LOCATION		
		-ROW edge	Maximum on ROW	+ROW edge
XS-29 Segment 16 - Section 377 - Structure #161 (ROW X-Section N5-16-3)	existing	0.10	6.85	0.26
	proposed	0.08	5.73	0.15
XS-30 Segment 16 - Section 377 - Structure #164 (ROW X-Section N5-16-4)	existing	0.03	0.86	0.12
	proposed	0.02	0.75	0.30

## Audible Noise

MPRP Average Load – December 16, 2008

Line Section	Configuration	AUDIBLE NOISE (dBA)			
		FAIR WEATHER		FOUL WEATHER	
		-ROW edge	+ROW edge	-ROW edge	+ROW edge
XS-29 Segment 16 - Section 377 - Structure #161 (ROW X-Section N5-16-3)	existing	18.3	19.1	43.3	44.1
	proposed	18.1	22.3	43.1	47.3
XS-30 Segment 16 - Section 377 - Structure #164 (ROW X-Section N5-16-4)	existing	15.9	18.1	40.9	43.1
	proposed	15.7	18.5	40.7	43.5

† < 0, i.e. below threshold of hearing