

**CENTRAL MAINE POWER COMPANY
RESPONSE TO ORAL DATA REQUEST NO. 3
DOCKET No. 2008-255**

January 22, 2009

ODR-03-59

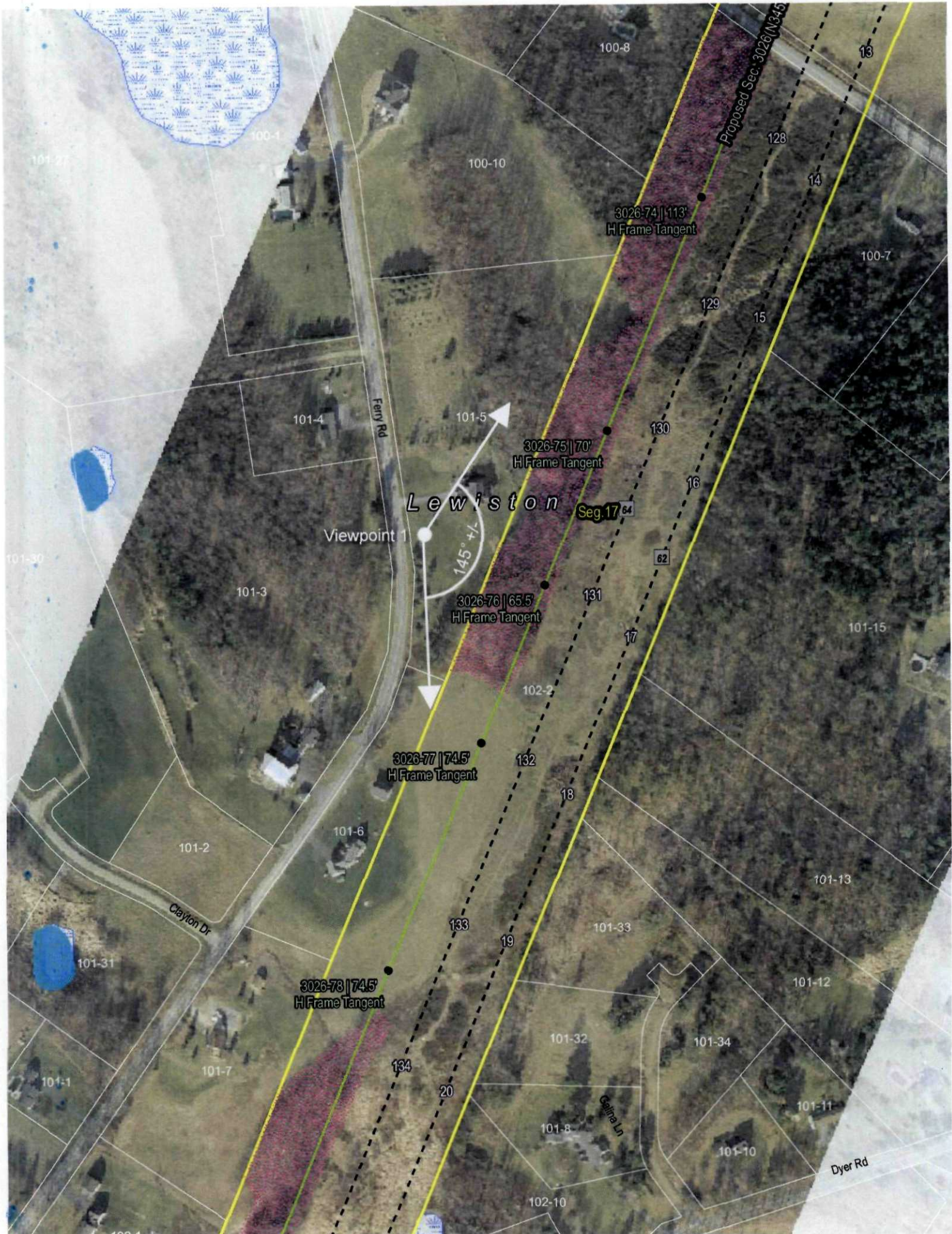
Q. Please provide a visual simulation from the Turgeon property (198 Ferry Road, Lewiston).

A. Attached is a visual simulation from the Turgeon property in Lewiston.

Response Prepared and Submitted By:

David Dominie

TRC Companies, Inc.



Proposed Sec. 3026 N345

3026-74 || 113'
H Frame Tangent

3026-75 || 70'
H Frame Tangent

Lewiston
Seg. 17

145° ± L

3026-76 || 65.5'
H Frame Tangent

3026-77 || 74.5'
H Frame Tangent

3026-78 || 74.5'
H Frame Tangent

Fairy Rd

Clayton Dr

Galina Ln

Dyer Rd

Viewpoint 1

62

64

17

133

19

134

20

100-8

100-10

100-1

101-27

101-4

101-5

101-3

101-30

130

16

101-15

101-2

101-6

102-2

132

18

101-13

101-31

101-33

101-12

101-1

101-7

101-32

101-34

101-11

101-8

101-10

102-10

102-1



Existing panoramic view looking west to southwest in front of the Turgeon Property on Old Ferry Road in Lewiston, ME.



Photosimulated view of proposed Segment 17, which includes two existing 115 kV transmission lines and one new 345 kV transmission line.



tjd&a
 Terrence J. Doherty & Associates
 Landscape Architecture & Planning
 1000 Main Street, Suite 200
 Lewiston, ME 04201

Photosimulation of Proposed Segment 17
 Turgeon Property
 198 Ferry Road, Lewiston, ME

Photos taken
 by TJDA:
 06 January 2009

Viewpoint
 1